

Employment Deprivation Domain Summary

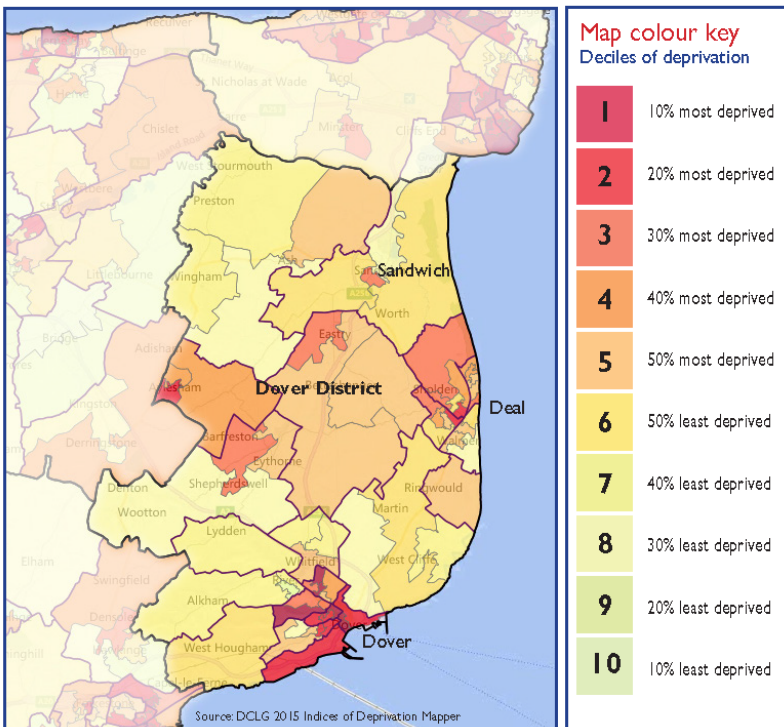
The Dover District's National Rank (using the Rank of Average Score):



The Employment Deprivation Domain measures the proportion of the working-age population in an area involuntarily excluded from the labour market. This includes people who would like to work but are unable to do so due to unemployment, sickness or disability, or caring responsibilities. It is one of seven domains that combine to produce the overall Index of Multiple Deprivation.

The Dover district is ranked 89 out of 326 English local authority districts.

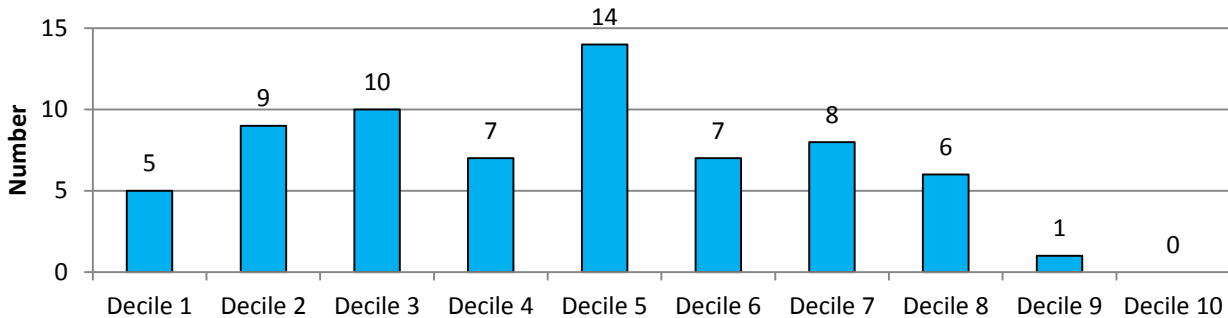
Employment Deprivation: Map for the Dover District LSOAs



- In the Dover district as a whole, 13.2% of working-age residents (8,029 people) are employment deprived.
- There are five LSOAs in the district in the top 10% most deprived in England. These fall within the wards of Castle; St. Radigund's; Buckland; Tower Hamlets; and Buckland.
- The LSOA within the Castle ward is also in the top 5% most deprived areas, with a rank of 1,369. In this LSOA, 28.6% of the population is employment deprived, compared to the district average of 13.2%.
- A further nine LSOAs are in the top 20% most deprived areas. These are within the wards of Maxton, Elms Vale and Priory (x2); Aylesham; Tower Hamlets (x2); Town and Pier; Middle Deal and Sholden; Castle; Mil Hill.

Lower-layer Super Output Areas or LSOA's are small areas with an average of 1,500 residents or 650 households

Employment Deprivation: Number of LSOAs in each decile



Employment Deprivation: Top 20% Most Deprived LSOAs in the Dover District - Relative Change between the English Indices of Deprivation (EID) 2010 and 2015

Any change in rank position represents relative change only – please see the ‘How has this changed since 2010?’ section of the full report for further information.

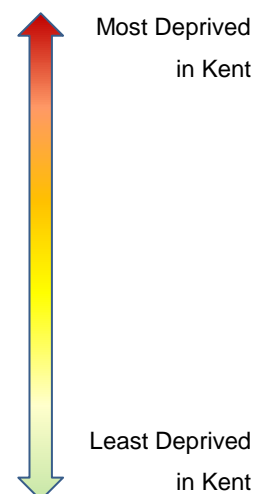
EID 2010 (Rank out of 32,482)			
LSOA Name	Ward	Score	Rank
E01024240	St Radigunds	0.23	1577
E01024247	Tower Hamlets	0.22	1894
E01024199	Castle	0.21	2248
E01024193	Buckland	0.21	2502
E01024215	Maxton, Elms Vale and Priory	0.19	3199
E01024196	Buckland	0.19	3317
E01024214	Maxton, Elms Vale and Priory	0.19	3471
E01024239	St Radigunds	0.17	4469
E01024248	Tower Hamlets	0.17	4602
E01024246	Tower Hamlets	0.16	5056
E01024192	Aylesham	0.16	5460
E01024219	Middle Deal and Sholden	0.16	5649

EID 2015 (Rank out of 32,844)			
LSOA Name	Ward	Score	Rank
E01033211	Castle	0.286	1369
E01024240	St. Radigunds	0.26	2131
E01024193	Buckland	0.247	2604
E01024247	Tower Hamlets	0.244	2712
E01024196	Buckland	0.243	2780
E01024215	Maxton, Elms Vale and Priory	0.219	3913
E01024214	Maxton, Elms Vale and Priory	0.211	4363
E01024192	Aylesham	0.21	4437
E01024248	Tower Hamlets	0.207	4627
E01024246	Tower Hamlets	0.2	5016
E01024249	Town and Pier	0.198	5192
E01024218	Middle Deal and Sholden	0.197	5250
E01033209	Castle	0.186	5957
E01024222	Mill Hill	0.182	6258

	Top 10%
	Top 20%

Kent Comparison: Employment Deprivation Domain EID 2015

Local Authority	Employment - Average score	Employment - Rank of average score (out of 326)
Thanet	0.186	11
Swale	0.141	68
Shepway	0.141	70
Dover	0.132	89
Gravesham	0.118	121
Ashford	0.095	185
Canterbury	0.094	189
Dartford	0.09	200
Maidstone	0.089	205
Tonbridge and Malling	0.076	252
Tunbridge Wells	0.07	269
Sevenoaks	0.067	281



Thanet is the most deprived local authority in Kent for this domain / measure. In Thanet, 18.6% of working-age residents are classed as employment deprived, compared to Sevenoaks, the least deprived area in Kent, where only 6.7% are income deprived. The Dover district is the 4th most deprived area in Kent (13.2% employment deprived).