

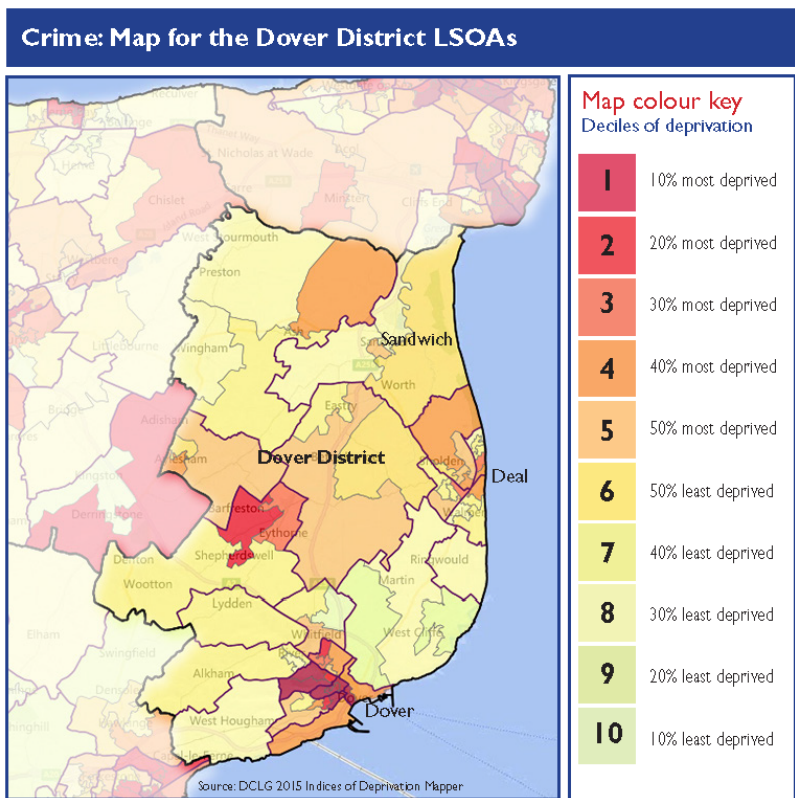
Crime Domain Summary

The Dover District's National Rank (using the Rank of Average Score):



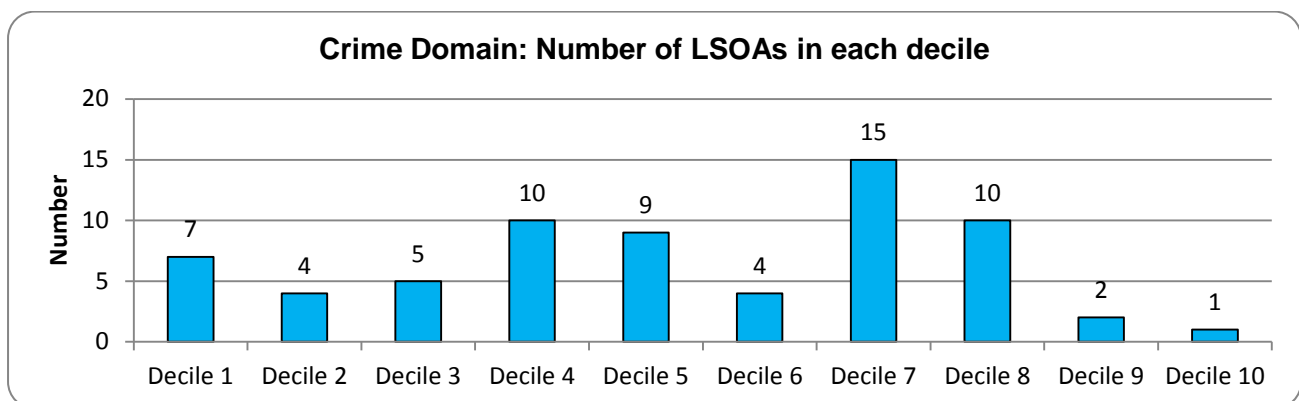
Crime is an important feature of deprivation that has major effects on individuals and communities. The Crime Domain measures the risk of personal and material victimisation at local level. It is one of seven domains that combine to produce the overall Index of Multiple Deprivation.

The Dover district ranks 105 out of 326 English local authority districts.



- There are seven LSOAs in the top 10% most deprived in England. These fall within the wards of Castle; Maxton, Elms Vale and Priory; Tower Hamlets (x3); and St. Radigund's (x2).
- The LSOA within the Castle ward is also in the top 1% most deprived areas and three other LSOAs are in the top 5% most deprived. These are within the Maxton, Elms Vale and Priory; Tower Hamlets (x2).
- A further four LSOAs are in the top 20% most deprived areas. These are within the wards of Maxton, Elms Vale and Priory; Eythorne and Shepherdswell; St. Radigunds; Buckland.

Lower-layer Super Output Areas or LSOA's are small areas with an average of 1,500 residents or 650 households



Crime Domain: Top 20% Most Deprived LSOAs in the Dover District - Relative Change between the English Indices of Deprivation (EID) 2010 and 2015

Any change in rank position represents relative change only – please see the ‘How has this changed since 2010?’ section of the full report for further information.

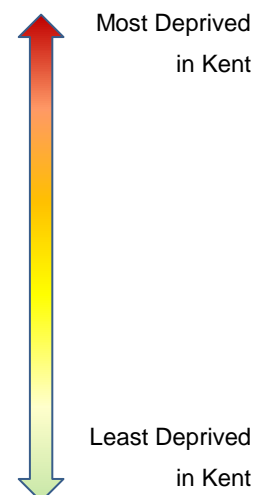
EID 2010 (Rank out of 32,482)			
LSOA Name	Ward	Score	Rank
E01024196	Buckland	1.09	2986
E01024241	St Radigunds	0.99	3740
E01024248	Tower Hamlets	0.91	4364
E01024246	Tower Hamlets	0.89	4588
E01024215	Maxton, Elms Vale and Priory	0.82	5310
E01024240	St Radigunds	0.8	5528

EID 2015 (Rank out of 32,844)			
LSOA Name	Ward	Score	Rank
E01033211	Castle	1.856	197
E01024215	Maxton, Elms Vale and Priory	1.526	690
E01024246	Tower Hamlets	1.472	817
E01024247	Tower Hamlets	1.319	1370
E01024248	Tower Hamlets	1.235	1768
E01024240	St. Radigunds	1.223	1823
E01024241	St. Radigunds	1.095	2644
E01024214	Maxton, Elms Vale and Priory	0.957	3754
E01024204	Eythorne and Shepherdswell	0.773	5549
E01024239	St. Radigunds	0.766	5617
E01024196	Buckland	0.687	6552

	Top 10%
	Top 20%

Kent Comparison: Crime Deprivation Domain IMD 2015

Local Authority	Crime Deprivation - Average score	Crime Deprivation - Rank of average score (out of 326)
Gravesham	0.778	12
Thanet	0.687	15
Dartford	0.517	34
Swale	0.441	43
Sevenoaks	0.112	104
Dover	0.094	105
Shepway	0.076	108
Ashford	-0.04	136
Maidstone	-0.106	148
Canterbury	-0.128	153
Tonbridge and Malling	-0.246	183
Tunbridge Wells	-0.332	202



Gravesham is the most deprived local authority in Kent for this domain / measure, with Tunbridge Wells being the least deprived. Although there has been an increase in the number of LSOAs in the Dover district in the top 10% most deprived in England, the district overall is 6th in Kent, indicating that crime is a potential issue across the county.