

THE ENGLISH INDICES OF DEPRIVATION 2015

The **Indices of Deprivation** is the collective name for a group of indicators measuring different types of deprivation, which are grouped into seven domains.



Income Deprivation



Employment Deprivation



Education Skills & Training Deprivation



Health Deprivation and Disability



Crime



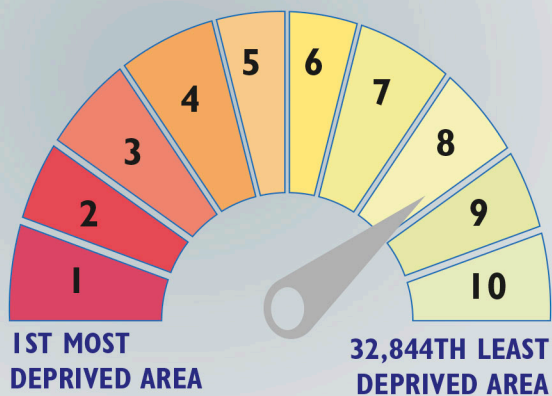
Barriers to Housing and Services



Living Environment Deprivation

These domains combine to create the **Index of Multiple Deprivation (IMD)**. The IMD is the official measure of relative deprivation for small areas (or LSOAs) in England.

The IMD ranks each small area in England from:



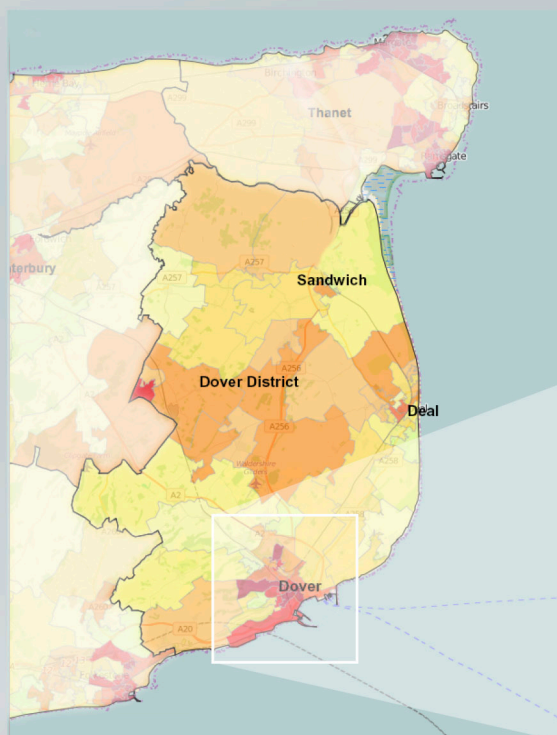
LSOAs

Lower-layer Super Output Areas 32,844 small areas in England with an average of 1,500 residents each.

DECILES

The LSOAs are divided into 10 equal groups or 'deciles'. LSOAs in **decile 1** fall within the most deprived 10% nationally and LSOAs in **decile 10** fall within the least deprived 10% of LSOAs nationally.

INDEX OF MULTIPLE DEPRIVATION 2015 IN THE DOVER DISTRICT

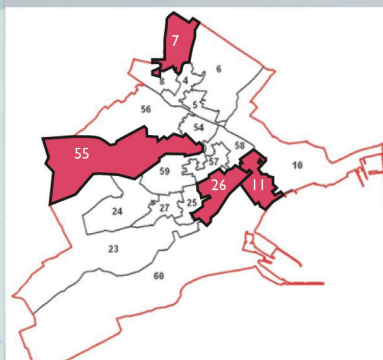


Dover District

Number of LSOAs in the Dover district by decile (with 1 being the most deprived and 10 the least deprived)

Decile	1	2	3	4	5	6	7	8	9	10
No. of LSOAs	4	7	5	9	14	10	7	6	4	1

The highest levels of deprivation are found in the urban areas of Dover



Dover Town

The 4 Dover LSOAs in the top 10% most deprived in England

- Area 55**
Within the St Radigunds ward.
- Area 11**
Within the Castle ward.
- Area 26**
Within the Maxton, Elms Vale and Priory ward.
- Area 7**
Within the Buckland ward.

HOW DEPRIVED IS THE DOVER DISTRICT?

The Dover district is ranked **126** out of 326 English local authority districts (where 1 is the most deprived).** In 2010 the district was ranked 127.

Of the 67 LSOAs in the Dover district **4** (6%) are in the most deprived 10% nationally.

This is up from 1 (1.5%) in 2010.

126

4

171

89



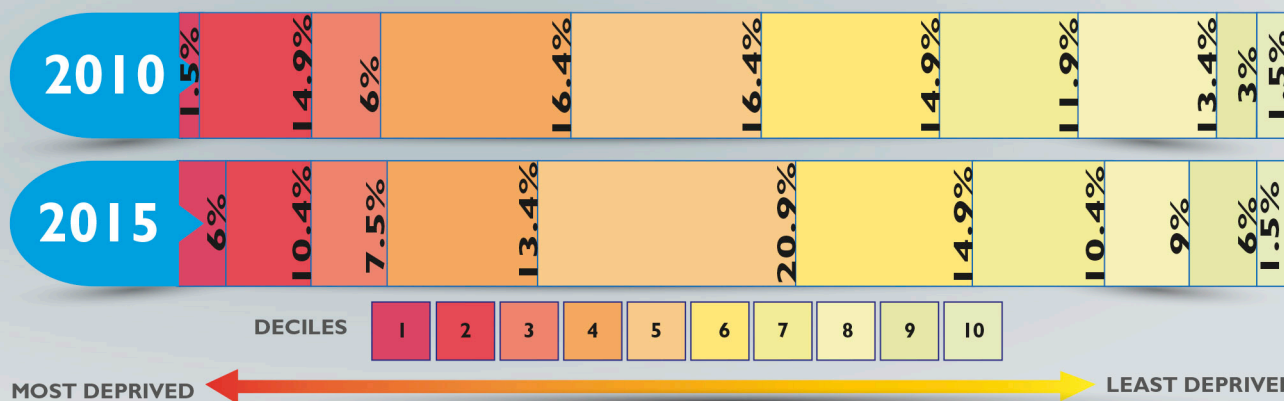
Within the individual domains, the Dover district's best ranking is in the Barriers to Housing and Services domain with a rank of **171** out of 326.**



The Dover district's worst ranking is in the Employment Deprivation domain with a rank of **89** out of 326.**

**Using the 'Rank of Average Score' measure.

Percentage of Dover district LSOAs by deciles - IMD 2010 and 2015



Number of LSOAs in the Dover district that fall within the 10% most deprived areas in England by type of deprivation



Seven domains of deprivation that when combined and weighted create the Index of Multiple Deprivation (IMD)

Two supplementary indices: Income Deprivation Affecting Children (IDACI) and Income Deprivation Affecting Older People (IDAOPI). These two indices are sub-models of the income domain, and as such do not feed into the overall IMD.

For further information: www.gov.uk/government/statistics/english-indices-of-deprivation-2015
www.dover.gov.uk/deprivation

Produced by Leadership Support Team, Dover District Council