

KEEP THE SEA PLASTIC FREE

- A **PLASTIC BOTTLE** LEFT ON THE BEACH MAY LAST FOR MORE THAN **450 YEARS** IN THE MARINE ENVIRONMENT.
- THE AMOUNT OF **MARINE LITTER** FOUND ON UK BEACHES HAS MORE THAN **DOUBLED** IN THE LAST 15 YEARS.
- IT'S ESTIMATED THAT **6.4 MILLION TONNES** OF LITTER ENTER THE SEA ANNUALLY.
- ON AVERAGE THERE ARE **46,000 PIECES OF PLASTIC** FLOATING IN EVERY SQUARE MILE OF OCEAN.

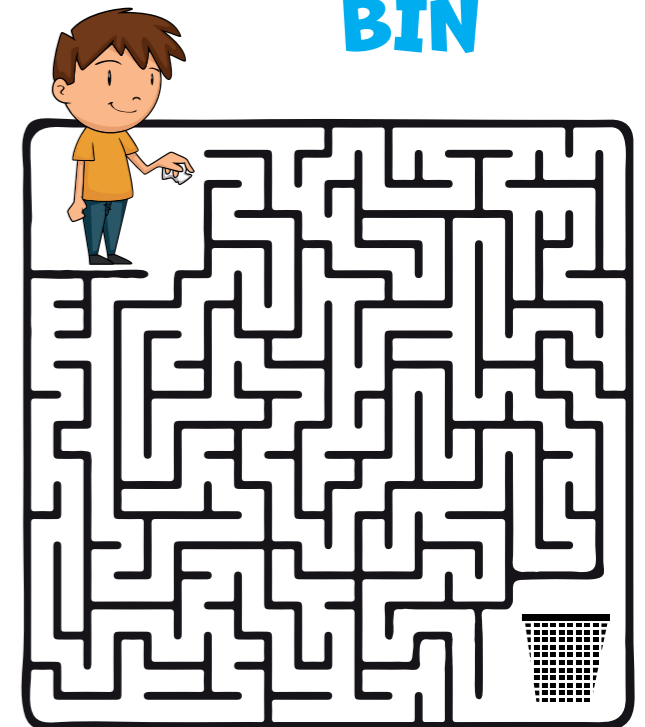
FIND THE LITTER WORDS

F	V	N	M	I	S	P	L	A	C	H	G	W	N	B	K	L	P	A	S	S	C	B	I
A	I	O	F	O	O	D	W	A	S	T	E	S	Q	D	V	U	A	Z	M	I	L	Z	X
N	M	T	A	C	G	A	S	Z	I	I	D	Y	V	Z	X	X	H	J	A	M	D	O	N
P	L	A	S	T	I	C	B	A	G	S	C	K	L	A	Z	U	O	B	I	M	B	S	C
S	P	O	T	T	Y	D	R	E	S	S	F	O	G	L	X	R	D	I	P	O	O	V	I
L	E	A	F	Y	D	I	P	F	R	E	S	H	J	E	L	Y	F	C	Z	I	T	H	C
D	G	X	O	W	S	X	Z	D	J	M	H	D	A	Q	W	B	I	K	D	F	T	C	C
S	H	O	O	T	G	C	P	I	C	K	I	T	U	P	C	F	E	W	H	V	L	I	L
Y	I	K	D	X	Q	Y	J	D	M	J	F	Q	O	L	L	S	F	E	N	X	E	O	P
G	R	Y	W	Y	D	X	S	M	V	C	X	T	T	L	P	S	C	A	F	R	S	I	T
V	N	F	R	D	T	G	S	K	C	A	N	S	S	C	D	Q	H	B	J	X	B	R	Y
A	S	D	A	A	S	D	F	G	H	J	K	I	Y	H	G	R	E	Q	W	E	R	T	J
Z	X	E	P	S	G	H	R	K	K	L	F	N	Q	X	S	E	W	V	B	R	F	S	Y
D	F	E	P	W	W	X	U	Q	T	Y	U	A	I	O	P	J	I	B	F	D	E	C	X
M	N	B	E	E	R	D	B	Q	G	H	I	C	S	A	K	M	N	I	B	F	V	S	P
F	C	U	R	K	N	Q	B	L	P	S	A	A	V	H	J	T	G	K	A	S	F	H	B
I	O	P	S	L	K	B	I	O	D	E	G	R	A	D	I	N	G	B	D	S	A	Y	I
Z	X	U	O	D	F	I	S	H	V	I	Q	A	X	O	H	B	U	X	I	U	T	G	S
F	T	R	S	K	L	C	H	Z	T	I	E	C	F	H	L	P	M	A	S	F	C	B	J
G	T	Z	V	I	B	N	I	O	P	S	R	A	H	S	A	N	K	L	P	A	C	H	O
V	H	Y	S	R	T	N	J	I	O	L	M	X	S	W	A	Z	B	I	L	O	P	H	N
M	K	O	B	H	U	Y	G	C	D	F	T	O	R	S	S	A	C	R	H	I	J	K	N
G	A	L	P	H	A	B	E	T	F	Y	A	T	V	D	R	U	M	N	K	O	L	I	V
X	T	H	U	I	L	P	A	S	N	M	K	Z	S	V	C	S	U	A	Z	C	K	S	Z
F	H	L	A	N	M	E	W	I	K	F	A	H	F	D	N	K	L	O	A	S	D	X	B
G	H	C	S	A	T	G	D	S	Y	K	L	P	C	S	T	E	L	F	A	E	L	Z	Q
J	A	R	F	Y	S	H	N	C	U	I	C	X	B	P	L	S	C	N	K	L	W	B	N
X	V	I	S	W	K	G	B	J	M	B	A	A	Q	I	K	L	A	T	F	E	V	S	M
D	F	M	T	H	I	Q	C	U	M	N	T	V	U	I	L	N	D	S	A	Y	K	B	V
O	N	E	W	S	P	A	P	E	R	C	F	A	R	T	A	C	Q	W	I	P	G	F	S
G	A	W	N	H	J	C	F	R	I	P	S	D	F	B	M	K	Q	S	R	G	U	I	X

- BIN
- SKIP
- CANS
- CRIME
- RUBBISH
- BOTTLES
- LEAFLETS
- PICK-IT-UP
- NEWSPAPER
- PLASTIC BAGS
- FOOD WASTE
- BANANA SKIN
- CHEWING GUM
- BIODEGRADING
- TOXACARA CANIS
- FAST FOOD WRAPPERS

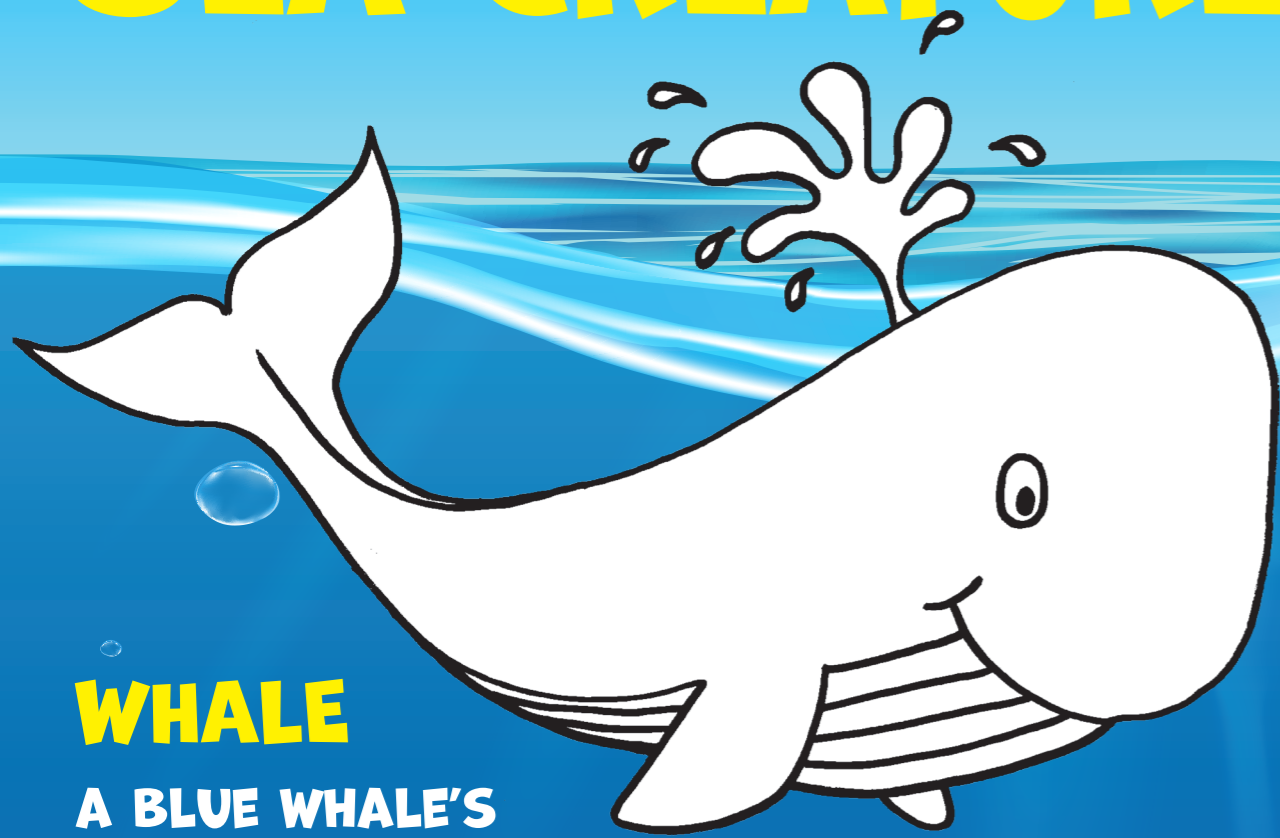
Look from left to right, up & down and diagonally to find the Litter!!!

FIND YOUR WAY TO THE LITTER BIN



- APPROXIMATELY **8 MILLION INDIVIDUAL PIECES** OF MARINE LITTER ENTER THE SEA EVERY DAY.
- **100,000 MARINE SPECIES** INCLUDING TURTLES, FISH, WHALES AND SEABIRDS **DIE EACH YEAR** DUE TO EITHER CONSUMING OR GETTING TRAPPED IN PLASTIC.
- THERE IS MORE **PLASTIC IN OUR SEA** THAN STARS IN OUR GALAXY.
- THERE'S AN **ISLAND OF MARINE LITTER** IN THE PACIFIC OCEAN CALLED THE NORTH PACIFIC GYRE, OR THE GREAT PACIFIC GARBAGE PATCH – IT IS **TWICE THE SIZE OF TEXAS.**

SEA CREATURE COLOURING FACT SHEET



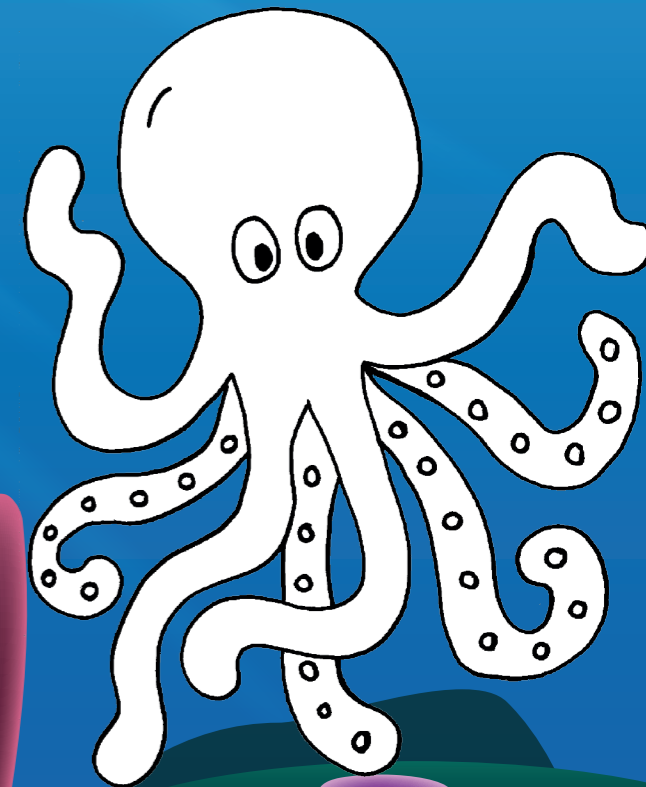
WHALE

A BLUE WHALE'S HEART IS THE SIZE OF A CAR



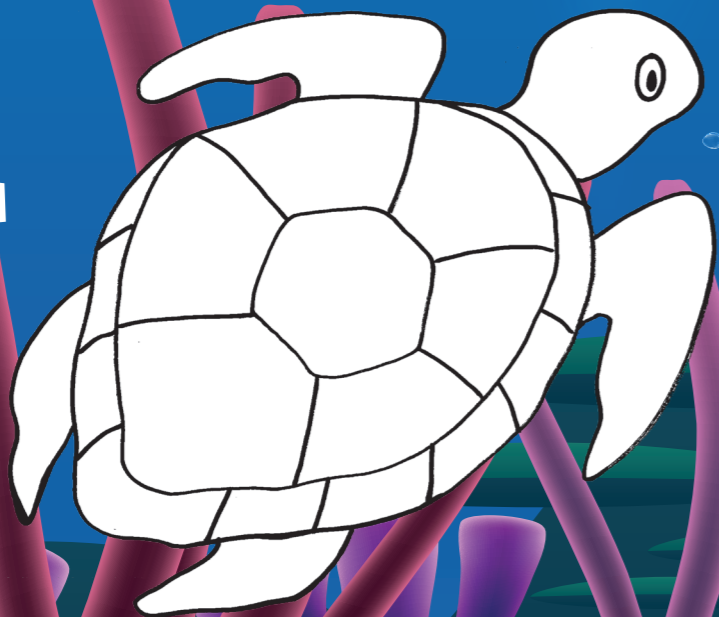
DOLPHIN

DOLPHINS ENTERTAIN THEMSELVES BY CREATING UNDERWATER BUBBLE RINGS



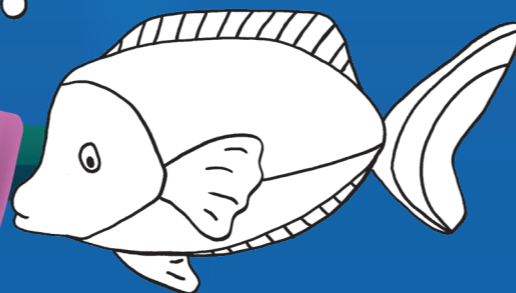
OCTOPUS

AN OCTOPUS CAN GROW A NEW LIMB IF ONE IS LOST



TURTLE

TURTLES CAN HOLD THEIR BREATH FOR FIVE HOURS



FISH

FISH CAN COUGH BUT THEY CAN'T SNEEZE



JELLYFISH

SOME JELLYFISH CAN GLOW IN THE DARK



CRAB

CRABS' TEETH ARE IN THEIR STOMACHS

SEAHORSE

SEAHORSES CHANGE COLOUR TO BLEND INTO THEIR BACKGROUND WHEN UNDER STRESS



STARFISH

STARFISH HAVE EYES AT THE END OF EACH ARM

