

DOVER BEACON



Putting the heart and soul back into the town centre - turning the tide and creating a realistic and deliverable wave of short, medium and long-term holistic regeneration, investment and growth for Dover.

Dover

'A Great Place to Live, Work, Visit, Learn and Invest'



DOVER BEACON

LEVELLING UP (Round 2)

Levelling Up is the government's programme to build back better after the pandemic. The Fund supports high priority and high impact projects that will make a visible, positive difference.

Objectives:

1. Boost productivity, pay, jobs and living standards by growing the private sector
2. Spread opportunities and improve public services
3. Restore a sense of community, local pride and belonging
4. Empower local leaders and communities

Themes:

1. Regeneration and Town Centre Investment
2. Cultural Investment (and Heritage)
3. Transport Investment

Bids to the Levelling up Fund must be submitted by 12.00 noon on 6th July 2022. Maximum value £20m. Grant decision expected by autumn 2022.

All funding must be spent by 31 March 2025 (or exceptionally 2025-26).

DOVER BEACON

Dover – Recognised as a Category 1 Priority Place by the Levelling Up Fund



- **Economic recovery and growth**

- Workforce qualification levels in the district are lower than the averages for Kent, the South-East and nationally
- Unemployment, including youth unemployment, are above the Kent average, particularly within the most deprived urban wards of Dover
- Over reliance on a small number of industries, such as seafaring.

- **Regeneration**

- Derelict, eyesore buildings in the town centre
- Requirement for employment space in the town centre
- Need for quality housing in the town centre.

- **Transport connections**

- Need to improve sustainable transport links.

DOVER BEACON

Proposed Project



Dover Beacon will develop the Bench Street area, making the town centre more attractive and increasing footfall.

- A new 4 floor 2000m² college campus to provide training opportunities in the fast-growing creative and digital industries
- New facilities 690m² for small/medium businesses to attract and retain skilled workers
- Additional electric bicycle hubs to improve sustainable transport links
- Creation of 800m² green space next to the River Dour
- Retention of some parking and EV charging points
- In the longer-term housing will be brought forward on the western side of the site.

DOVER BEACON

Land Assembly



- **Building A**
Creative Centre funded by FHSF
- **Building B**
Business Centre
- **Building C**
EKC Dover School of Art & Design
- **Building D**
Retained parking
- **Building E**
Commercial and Residential (future phases)
- **Building F**
Commercial and Residential (future phases)

- The Council is negotiating to purchase 3 properties at Bench Street and has already purchased 15 Bench Street
- Several buildings, including the derelict property at 11 Bench Street (known as the Banksy Building), will be demolished
- The project will take approximately five years to complete.

DOVER BEACON

Dover School of Art & Design - Vision



The EKC Group, in partnership with Dover District Council will create and operate a new facility. We aim to:

- inspire a diverse range of people to join the creative and digital sectors
- provide opportunities for employers and students to collaborate on projects that emulate the roles, responsibilities and real-life scenarios of the workplace
- develop industry-ready graduates of the highest calibre
- influence the future through creative thinking and technology
- support SMEs in East Kent, for example by creating experiential events, both 'live' and through digital interactions
- create capacity for more students to participate in Green Engineering and Data Analysis curriculum in the existing Pencester Road campus.

DOVER BEACON

Dover School of Art & Design - Facilities



Dover School Of
Art & Design



Highly equipped and innovative spaces including:

- a skills demonstration space for displaying student-created visual, audio, video and web-based work, and to provide a meeting point with employers / wider community
- an open-plan, flexible interactive spaces that enable cross discipline artworking activity
- a photography / film studio, equipped with integrated lighting, motion capture and video recording equipment
- digital suites for web design, coding and user experience design.

DOVER BEACON

**Creation and delivery of high-quality
business space**

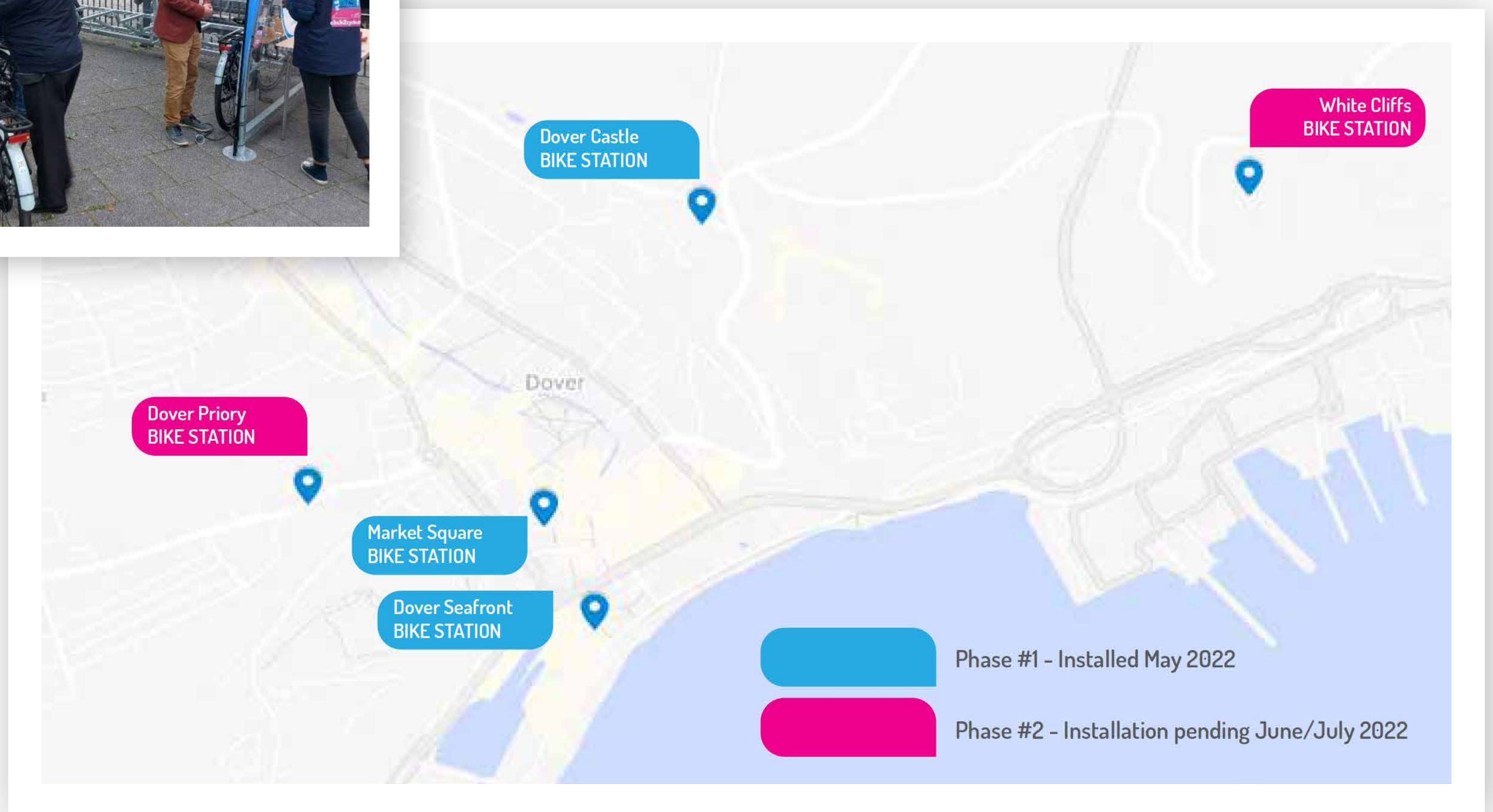


A new four floor building will be constructed.

- Will provide space for small / medium sized businesses
- Will provide potential employment opportunities for graduates of the Dover School of Art and Design.

DOVER BEACON

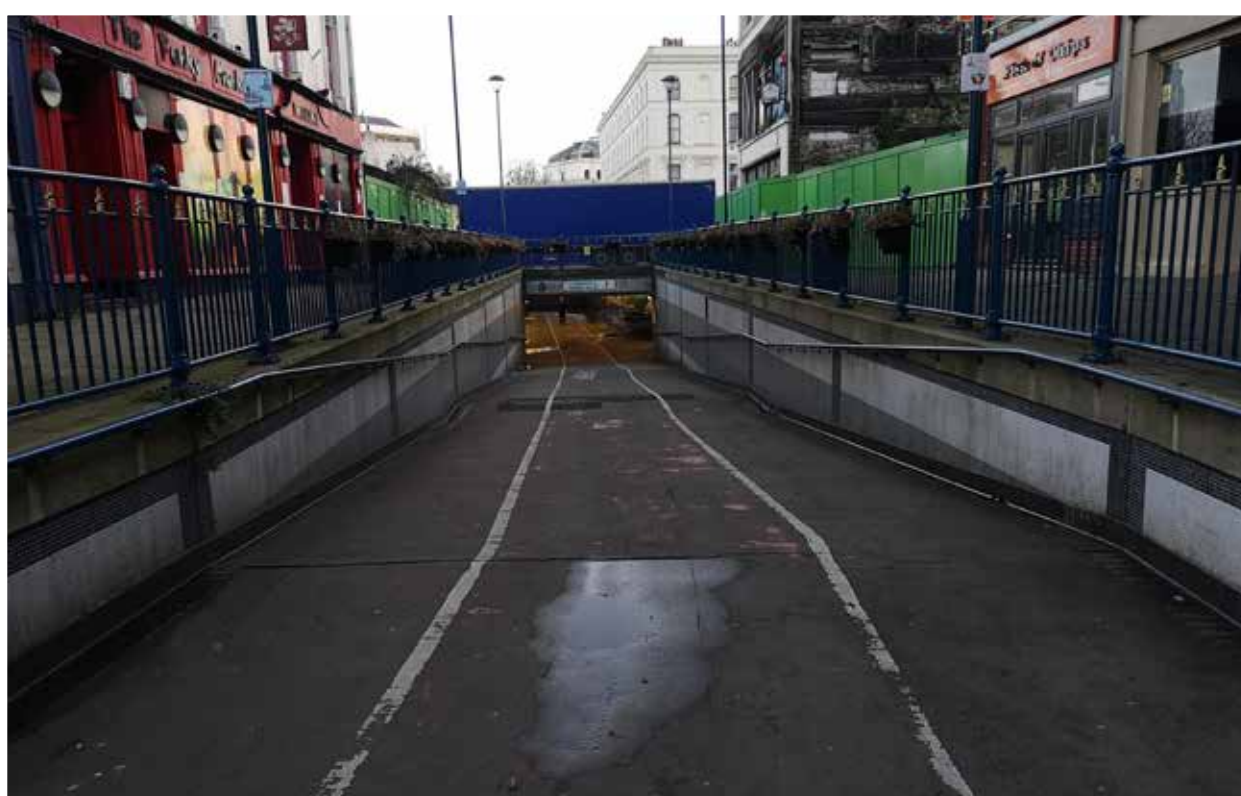
Dover Cycle Scheme Expansion – Phase 2



- Kent County Council recently invested £100k into a new electric cycle hub / hire scheme for Dover
- The project is managed by Destination Dover on behalf of Dover Town Council
- The proposed Dover Beacon project will add further hub sites linked to employment areas and the River Dour Greenway.

DOVER BEACON

Other Regeneration Projects



Underpass and Creative Centre

**Future High Streets Fund,
total project value £5.1m**

Funding secured for a creative centre on Bench Street and improved link between Bench Street and the seafront.



Market Square

**Coastal Communities Fund,
total project value £3.6m**

Renovation of the Market Square including the new misting feature and improved public realm. On target to be completed in July.



Maison Dieu

**Heritage Lottery Fund,
total project value £9.1m**

Reawakening of the neo-gothic Dover Town Hall.



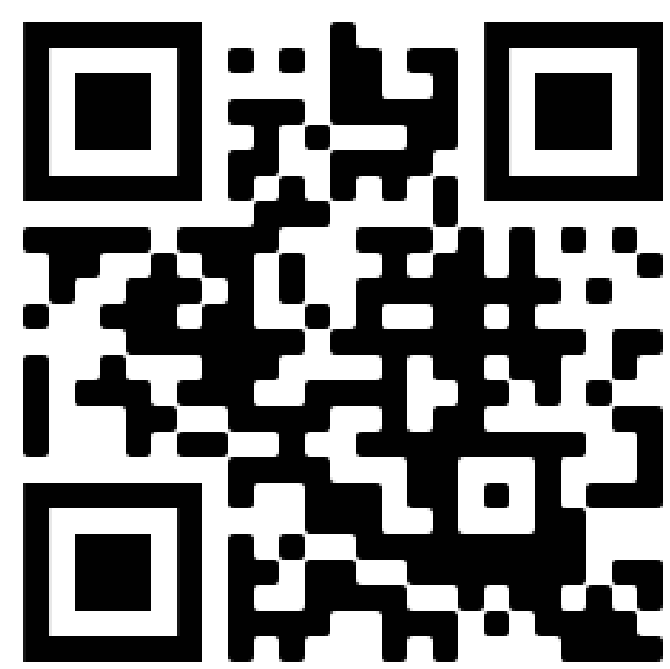
Fastrack

**Homes England infrastructure funding,
total value £26m**

A rapid, reliable bus service between Whitfield, the town centre and Dover Priory Station. Electric vehicles funded by the Department for Transport ZEBRA scheme.

DOVER BEACON

Have your say



Please complete our survey,
either here or online
www.dover.gov.uk/luf

Your comments will help to shape our funding application.



**Keep Me
Posted**

News and alerts by email

**REGISTER NOW AT
DOVER.GOV.UK/KEEPMEPOSTED**

