

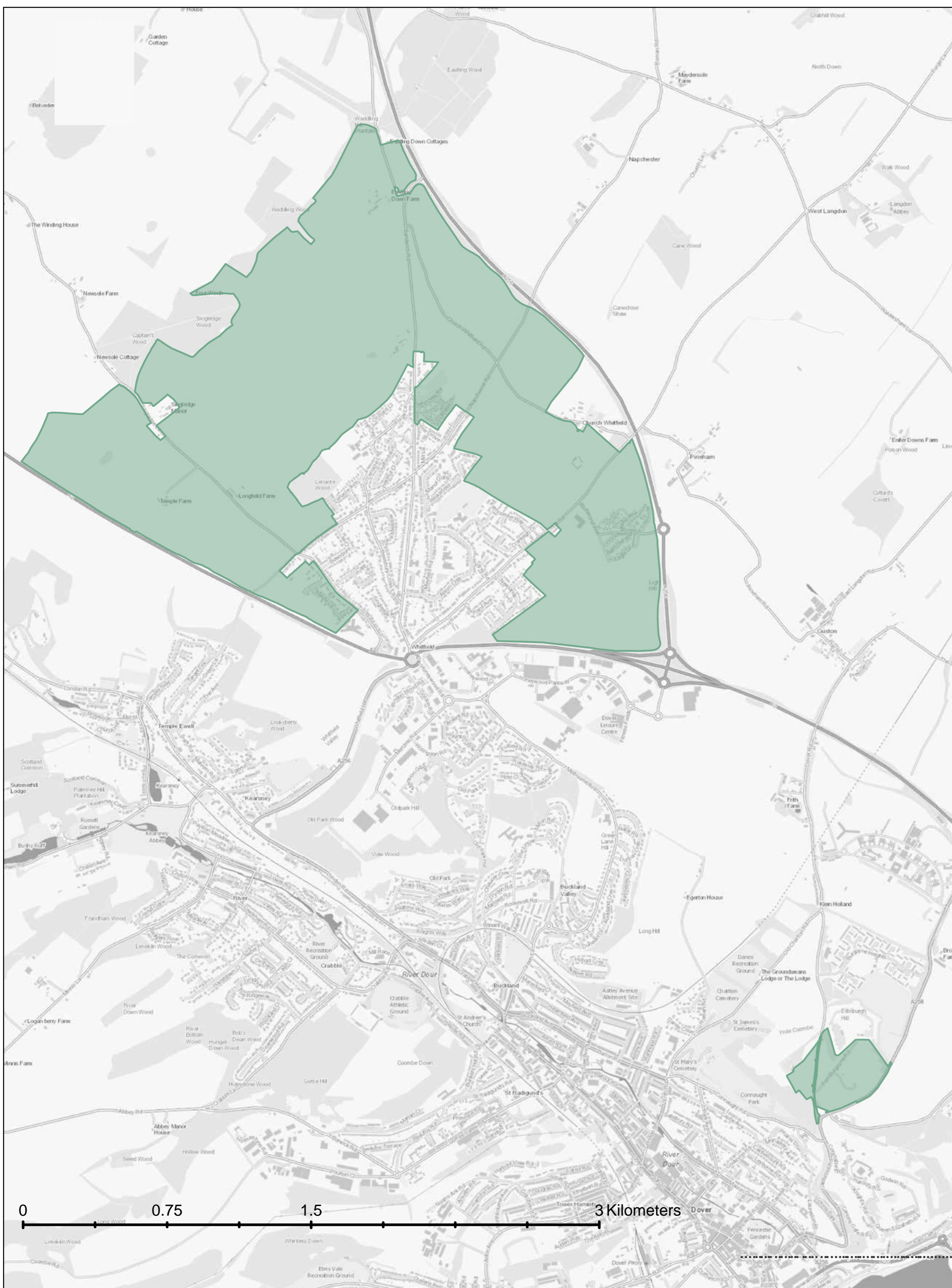
DOVER *fastrack* ELECTRIC

PLANNED OPENING AUTUMN 2023



DOVER *fastrack* ELECTRIC

Planned Housing Growth at Whitfield and Connaught Barracks



The adopted development plan for the Dover district establishes the Strategic Housing Allocation at Whitfield of 5,750 homes and up to 300 homes at Connaught Barracks. The new and emerging Local Plan continues to support these two allocations adding a further 600 homes to the planned development at Whitfield. These developments will provide a large proportion of the housing need of the district to 2040 and beyond.

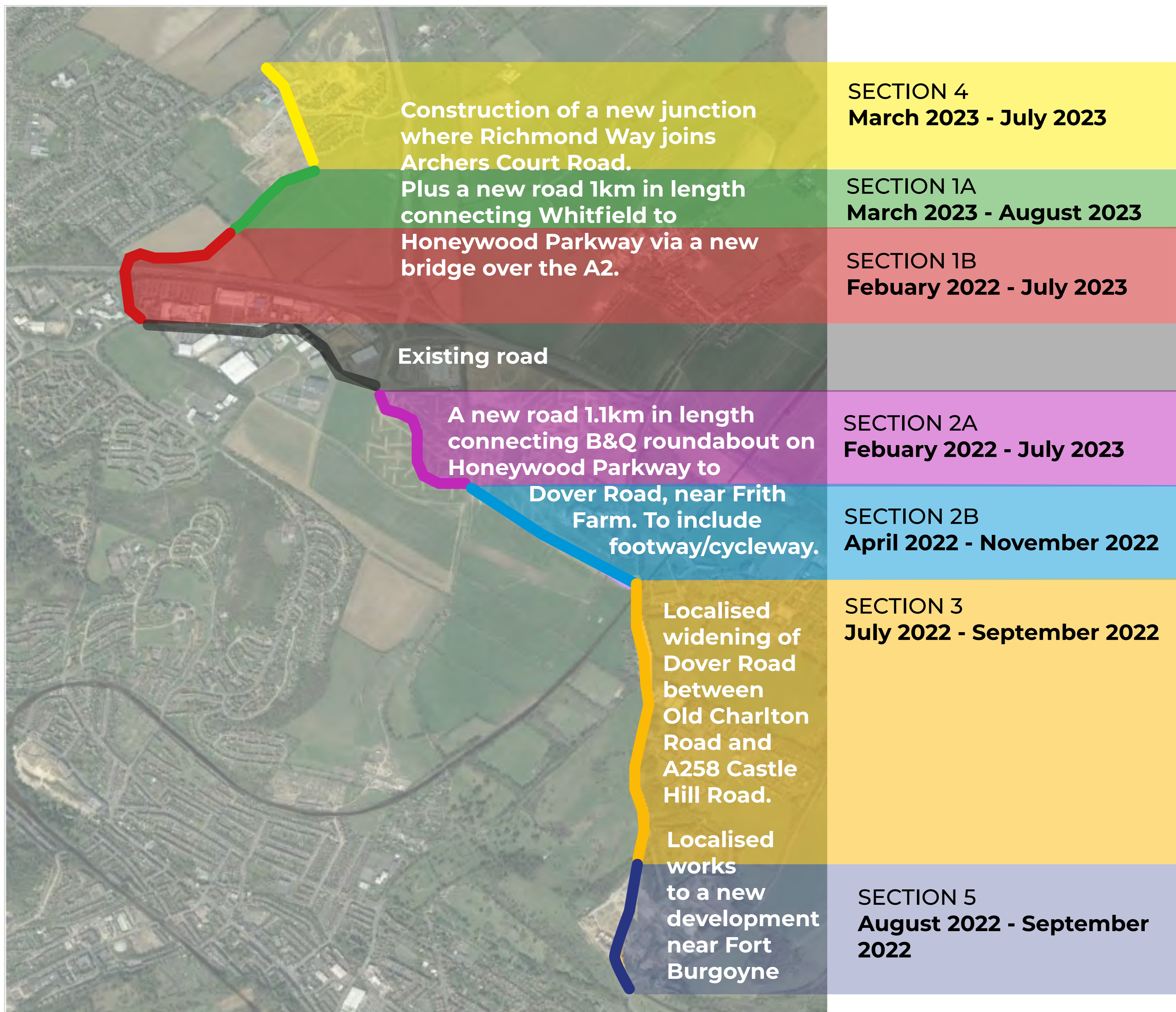
National Planning Policy Framework (2021) places a responsibility on Local Authorities to prepare plans 'with the objective of contributing to the achievement of sustainable development'.

Dover District Council has been given £22.9m of funding from Homes England for construction of new infrastructure with further funding of £1.44m from the Department of Transport to buy electric vehicles. This will support the housing growth at Whitfield through the delivery of a sustainable bus service linking the developments at Whitfield and Connaught to the town centre and Dover Priory Railway station.

Dover District Council, alongside Kent County Council, will provide Dover's first zero emission bus service with pedestrian and cycle links to the town centre, delivering a sustainable transport solution whilst contributing to wider environmental objectives.

DOVER *fastrack* ELECTRIC

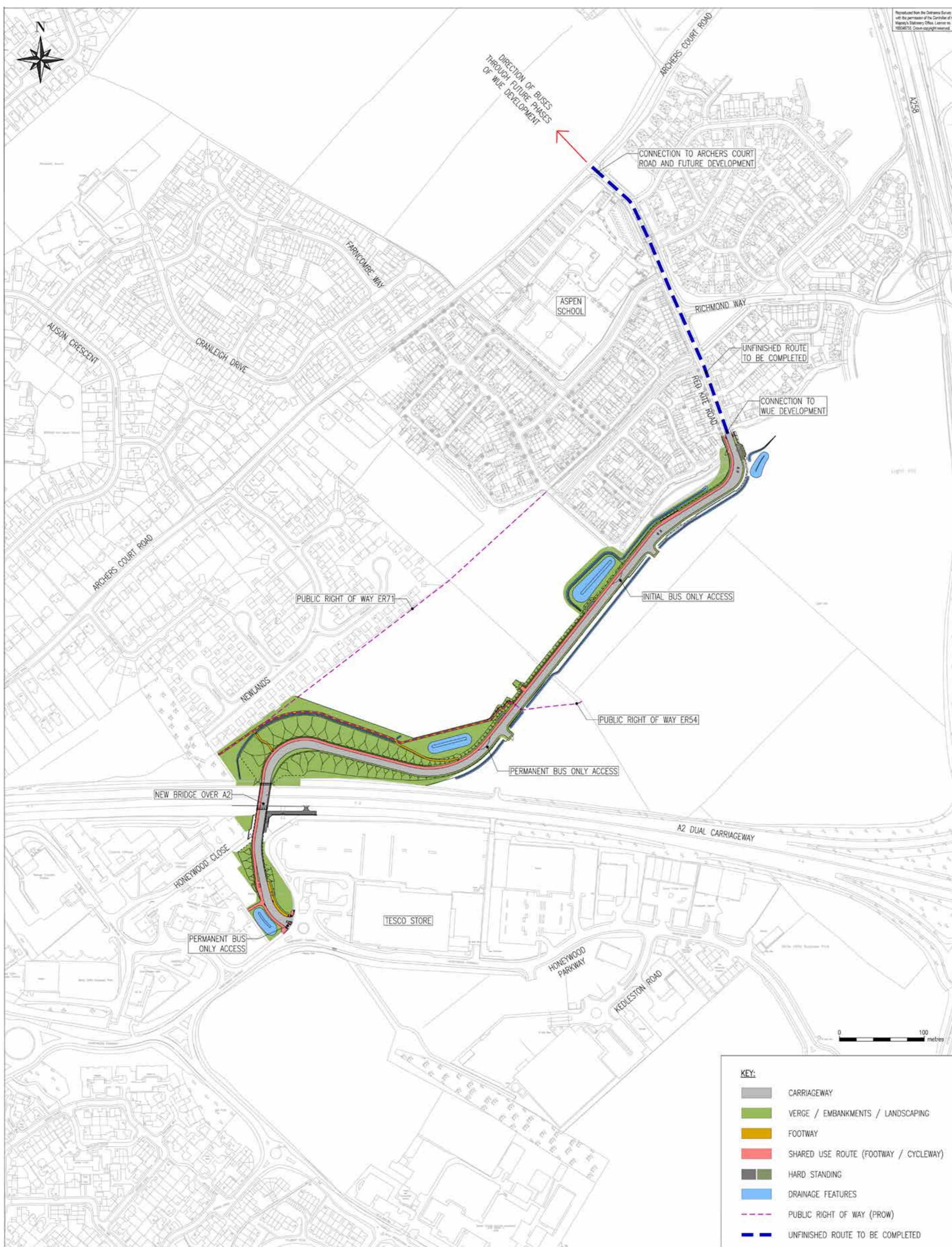
Indicative Programme Timeline



DOVER *fastrack* ELECTRIC

Section 1A and 1B

A new road 1km in length connecting Whitfield to Honeywood Parkway via a new bridge over the A2.



DOVER *fastrack* ELECTRIC

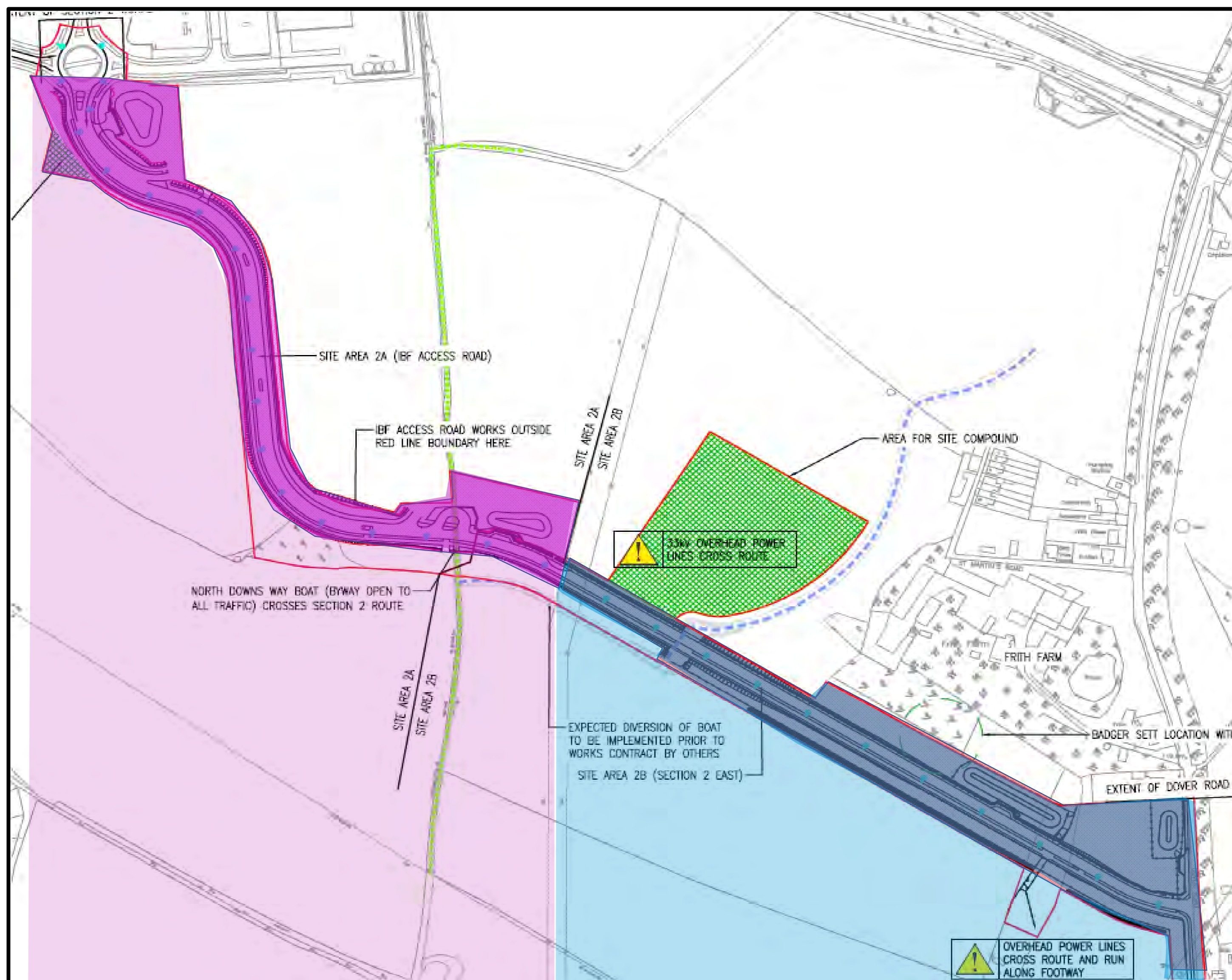
Section 2A and 2B



A new road 1.1km in length connecting B&Q roundabout on Honeywood Parkway to Dover Road, near Frith Farm. To include footway/cycleway.

DOVER *fastrack* ELECTRIC

Section 2A and 2B Indicative Timeline



SECTION 2A

Vegetation Clearance
February 2022
 Pre-Earthwork Drainage
February 2022 - May 2022
 Earthworks
May 2022 - June 2022
 Carriageway Construction
April 2022 - July 2022
 Landscaping
November 2022

SECTION 2B

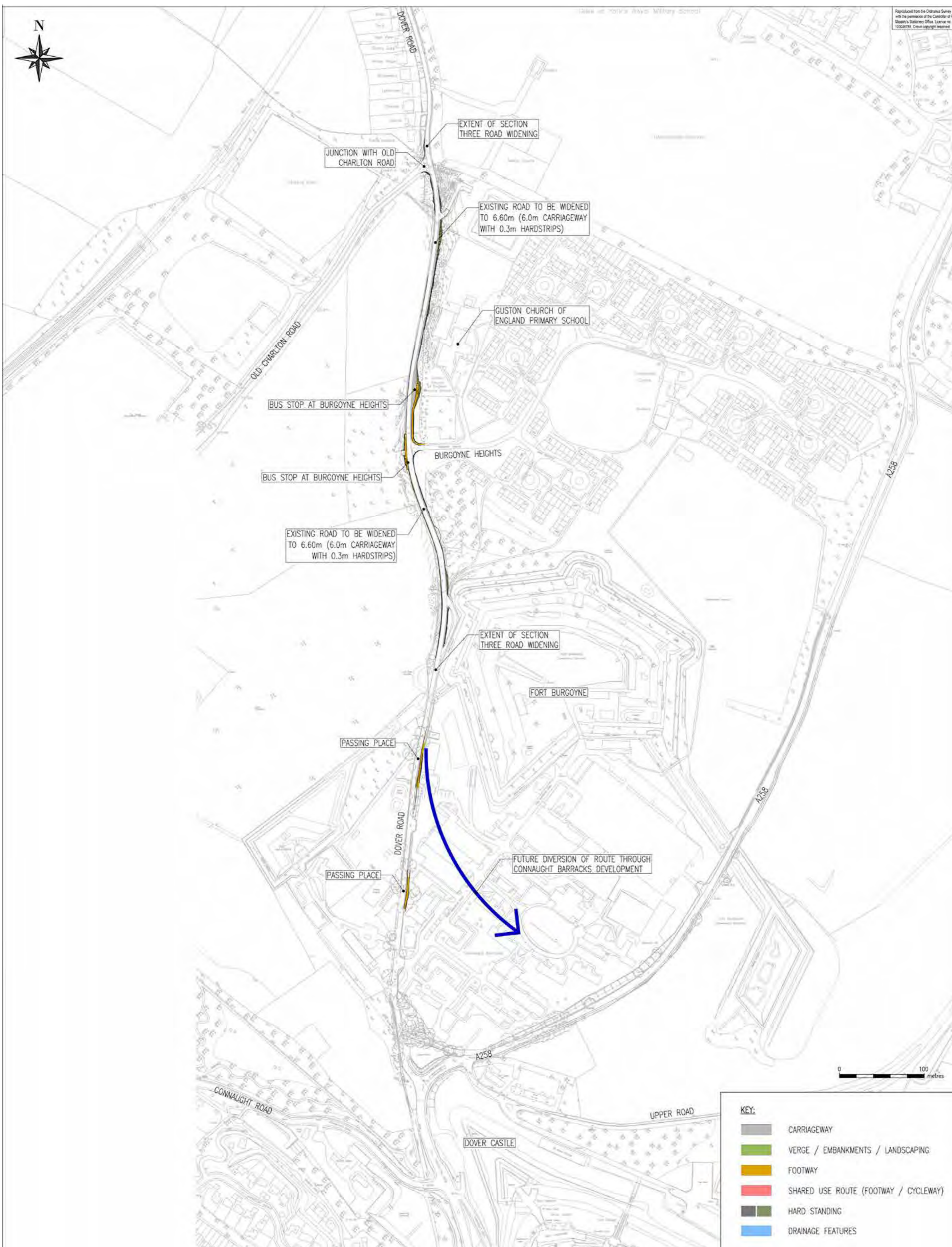
Vegetation Clearance
February 2022
 Archaeology
February 2022
 Pre-Earthwork Drainage
April 2022 - June 2022
 Earthworks
June 2022 - July 2022
 Carriageway Construction
July 2022 - August 2022
 Landscaping
November 2022

DOVER *fastrack*

ELECTRIC

Section 3 and 5 Indicative Timeline

Localised widening of Dover Road between Old Charlton Road and A258 Castle Hill Road.



SECTION 3 & 5 INDICATIVE TIMELINE

Temporary Road Closures between Old Charlton Road to Burgoyne Heights
July/August 2022

Temporary Road Closures between Burgoyne Heights to A258 Castle Hill Road
August/September 2022



Frequently Asked Questions

General Project Information

How much will the project cost and how will it be funded?

Dover District Council was awarded £22.9m by Homes England to stimulate new housing and is working with Kent County Council as the Highway Authority.

Who will be carrying out the work?

Colas UK Projects Ltd.

How long is the project expected to take?

Construction of the project is expected to take around 18 months from February 2022 through to Autumn of 2023.

Will the roads have street lighting?

Yes, street lighting will be provided in Sections 1 & 2.

How will pedestrians and cyclists be catered for in the new road layout?

A shared footway/cycleway is being provided along the length of Sections 1 and 2.

What are the environmental impacts of the scheme?

It is unfortunate that some existing trees have been removed as part of the scheme, but this is unavoidable due to the constraints of the route. However, we will plant more than 10,000 new trees, shrubs, and hedgerows, and provide enhanced wildlife habitat in the area.

How will you protect residents from noise and/or dust?

To minimise noise disruption works will mainly be carried out during the daytime. Dust will be controlled by using a water bowser for dust suppression especially during the hotter dryer periods.

Will residents be affected by increased air pollution?

With a reduction in traffic congestion and reduced queuing it is anticipated that there will also be a reduction in air pollution. The introduction of Dover's first ever zero emission bus service is to play a significant part to reduce air pollution.

Will there be a site compound?

A site compound will be in a designated area leading off from the Tesco roundabout.

Traffic Management Impacts

Will there be night work?

The aim is to keep night works to a minimum to avoid unnecessary disturbance to adjacent residential properties. However, we are only permitted to have lane closures on the A2 overnight, and for certain activities night work will be unavoidable, where lane closures are required to carry out the works safely. Residents and stakeholders will be notified in advance of any night time works.

Will there be road closures?

Road closures will be required along Dover Road to allow works to be carried out safely. Weekend closures of the A2 will also be required for the bridge installation as a crane will be required to lift the bridge beams into position. This will also enable the work to be undertaken safely and more efficiently, reducing the overall impact of the work. Residents and stakeholders will be notified in advance of any road closures once exact details have been finalised.

How will work affect access to local schools and businesses on the Dover Road?

The programme has allowed for minimum disruption by ensuring road closures will be carried out during the school summer holiday period. Sufficient traffic management diversions will be put in place as required. Schools, businesses and residential areas will be provided with updates via newsletters, social media and via Dover District Council's Website.

Will bus services be affected?

It is likely that services will be affected at some stage during the works mostly associated with any road closures on Dover Road, however we will work closely with contractors and the bus operators to ensure this is kept to a minimum.

How will I access Tesco, B&Q and other retail outlets on Honeywood Parkway?

Access to these locations will remain unchanged and should not cause any disruption to your day-to-day activities throughout the duration of the work.

How can I find out more information or make comments about the scheme?

If you want to learn more about planned activities, get involved in community events or take advantage of free training opportunities, please call or text our dedicated Public Liaison Officer on 07799 835379 or email PLODoverFT@colas.co.uk or sign up to Dover District Council's 'Keep Me Posted' service at www.dover.gov.uk or go to www.kent.gov.uk/roads-and-travel/road-projects/in-progress-road-projects/dover-fastrack-bus-lane

DOVER *fastrack* ELECTRIC

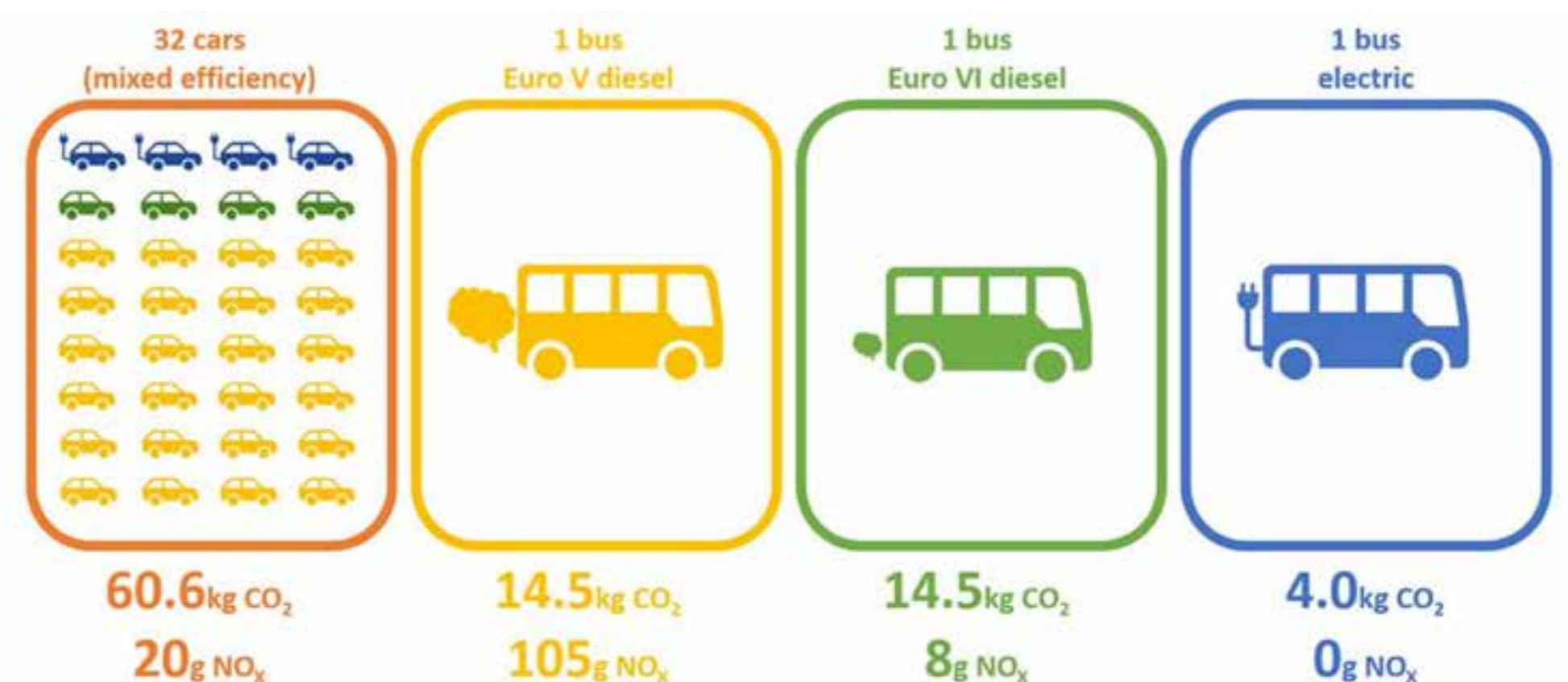
What is Dover Fastrack?



Fastrack is already established in Dartford and Gravesend and is making a real difference. Positioned in the hierarchy of public transport between a railway service and normal bus services, the successful Fastrack model is expanding and will ultimately connect the major new developments in Dover with core express routes on which only Fastrack services will be allowed to run.

Alongside enhanced electric buses, Fastrack will provide fast, frequent, reliable high-quality services that ensure people can 'get around' to work, to school, to play and to London and the continent via its link to the town centre and Dover Priory station! Exact details of the service are still to be finalised but is likely to operate every 20 minutes between 6am and midnight.

Flexibility is a watchword for Fastrack. A district facing such growth across a relatively large area and over a long period demands a transport system that can grow with time. As a bus-based system Fastrack has that flexibility built in, yet at the same time offers the reliability and attractiveness of a modern tram. As well as being ultra clean, Fastrack will be a driving force behind regeneration in Dover!



DOVER *fastrack* ELECTRIC

Proposed Bus stop locations



Ref	Proposed Bus Stop location
1	Dover Priory Station
2 & 3	York Street
4	Market Square - Westbound only
5	St James - Northbound only
6	Canon's Gate - Northbound only
7 & 8	Dover Castle
9 & 10	Fort Burgoyne
11 & 12	Burgoyne Heights
13 & 14	Frith Farm
15 & 16	Leisure Centre
17 & 18	Council Offices/ Tesco
19 & 20	Light Hill - Future Development Site
21 & 22	Eagle Drive
23 & 24	Richmond Way
25	Cranleigh Drive - Eastbound only
26	Farncombe Way - Northbound only
27	Cornfields - Westbound only
28	Alison Crescent - Westbound only
29	The Archer - Southbound only
30	Archers Court Road - Eastbound only
31	Archers Court Road - Eastbound only