

IMPORTANT INFORMATION

Drop-In sessions:

2022

Wednesday 26th October
 Wednesday 30th November
 Wednesday 14th December

2023

Wednesday 25th January

Location:

Colas Site Office, off Tesco Roundabout, Honeywood Parkway, CT16 3PS.

Time:

12 noon to 2pm

Tel: 07799 835379

Emergency Breakdown Tel:

07974 617256

Email:

PLODoverFT@colas.co.uk

Twitter:

@ColasDoverFT

Website:

www.dover.gov.uk
www.kent.gov.uk

Dover Fastrack Newsletter #8

Section 1 – Honeywood Parkway over A2

What has been happening

Since our last newsletter we have begun the construction of the piling platform on the northern side of Section 1 that will form the foundations for the bridge. To assist with our work the existing farmers road from the A2 is being widened to improve access.

Piling Platform construction



We have continued with drainage construction with the installation of a 5m deep chamber which will take the surface water from the A2.

We successfully implemented a full road closure on the A2 west bound carriageway to allow for the roadworks to be extended and we thank you for your patience.

Looking ahead

Over the next month we will continue with the drainage installation, installing pipes and inspection chambers in Section 1 A2 North.

Within our work area at Whitfield roundabout to Tesco we will be installing and testing the test piles.

Vibration Monitoring - We have set up vibration monitoring in Section 1B north, specifically along the site boundary closest to Newlands. We are using a data visualisation system called CALYX. We have alarms that let us know instantly if the allowable vibration limits have been exceeded. As we have a large embankment to construct this is where much of the vibration could come from, during the compaction of the granular fill material. Therefore, we are going to be testing different methods of compaction, using the latest compaction equipment on the market. We will conduct testing with different methodologies including non-vibratory rolling to see which is best and will use the lowest vibration impact we can. We will be undertaking the testing of the equipment first and then we will be starting the embankment construction.

Section 1 Fact Find

The wire settlement gauge that has been installed for the earthworks monitoring has an accuracy of +/- 1mm

Section 2 B&Q Roundabout to Dover Road

What has been happening

We have laid Tarmac on the road throughout the whole of Section 2, up to Dover Road. Earthworks has been ongoing by filling verges and footpaths.



Drainage works

Tarmac laid in Section 2



Drainage ponds and soakaway tanks have been installed to combat flooding. Street light ducting is being installed in the new footpaths.

Looking ahead

We will continue installing deep boreholes for drainage and earthworks and installing the street lighting ducting.

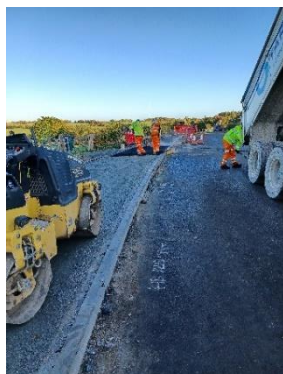
The road will be widened to improve access at the end of section 2 where there will be Post and Rail fencing installed to the boundary.

Section 2 Fact Find

The boreholes that will be installed will be 20m deep into the ground.

Section 3 – Dover Road

What has been happening



We have installed a new section of footpath adjacent to the corner of Burgoyne Heights.

Laying footpath

In phase 2 of the works in Dover Road, we have widened a section of road from the corner of Burgoyne Heights down towards the new housing development at Connaught barracks.



Widening Works

Looking ahead

Section 3 will be revisited in the new year to resurface the whole of the section, and to install the new layby located behind Guston Primary School, updates will be provided to affected residents and stakeholders.

Section 3 Fact Find

The excavation works for areas of road widening was carried out using vacuum excavators. The high-powered suction machines expertly remove the soil, safely exposing live utilities and services with little risk of damage or personal injury.

Noise, Vibration, Dust monitoring

Vibration monitoring is set up in Section 1 North side of the A2 by Newlands. The monitoring set up constantly sends readings to Colas and are monitored regularly to ensure we are keeping on top of vibration levels.

Noise monitoring is also being carried out on Dover Road near the road closure and in Section 1 North by Newlands.

The installation of noise, ground, and vibration plates to monitor any earth movement helps us to ensure that we are staying below limits and are causing as little impact as we can.

Social Value

For schools in the local area, we are providing talks both at primary and secondary level. These will cover topics such as Health and Safety, how to become a Civil Engineer and the Dover Fastrack project itself. These aim to get children interested in working within construction and show them the variety of jobs that they can explore, both on site and in an office. It will also teach them how to look after themselves in a construction setting and, in any work they choose to go in to.

Working with Local Businesses

We are working with Nusteel Structures who are locally based in Hythe. They are our supply chain partner and will be delivering the steelwork for the bridge beams. They employ 80 staff directly. We are using a Kent based supplier to support local businesses and help reduce the carbon footprint of the scheme. They will also be painting the steelwork, keeping all the work local and eliminating the need to transport the heavy beams to other companies. We are using five beams for the construction of the bridge, with each beam around 30m in length and weighing 13 tonnes.



Traffic Management

Section 1 Tesco Roundabout to Whitfield

Narrow lanes traffic management remains in place with reduced speed limit installed on the A2 between A256 Whitfield Interchange and A256 Whitfield Roundabout both east and westbound until June 2023.

Emergency Free Breakdown Recovery is available within the narrow lane section on the A2 via a dedicated 24hr Traffic Safety and Control Officer number on **07974 617256**.

A2 Lane 1 Closure, Eastbound from Whitfield roundabout to Whitfield Interchange on the night of the 21 October. The works are essential for enhancing the site entrance off the A2. We will be completing vegetation clearance either side of the Colas site entrance to improve visibility and site lines.

Section 2 Dover Road widening

A full gated road closure of Dover Road highlighted in red on the plan overleaf is required and a diversion route will be in place. Signs and barriers will be visible on site. These works will continue **from 7am 31st October to 5.30pm 11th December**. In case of a Traffic Management Emergency the dedicated Traffic Safety and Control Officer can be contacted on 07974 617256.

The closure is required for the safety of the public and workforce while the junction in Section 2 is constructed.

The alternative route for any through traffic is via The Lane, A258 Deal Road/Castle Hill Road and vice versa.

Useful Contacts



PLO Tel: 07799 835379 **Emergency Breakdown Tel:** 07974 617256



Email: PLODoverFT@colas.co.uk



Twitter: @ColasDoverFT



Website: www.dover.gov.uk www.kent.gov.uk

Diversion Route

