

DOVER FASTRACK – PROJECT NEWSLETTER

Moving into the fast lane and Public Exhibition News

Welcome back as we bring you up to speed with **Dover's first ever zero emission bus service**, we are excited to announce the forthcoming Public Exhibitions to be held in Dover Town, Whitfield and Guston, a perfect opportunity for you to meet the project teams from Colas, Dover District Council and Kent County Council to answer any questions you may have. We look forward to meeting you.

What has been happening?

Colas commenced works on the 14th February 2022. Site set up commenced adjacent to the B&Q roundabout. (North & South) either side of the A2 carriageway vegetation and tree clearance completed in preparation for the construction of the new overbridge.

Archaeological investigations have now been completed throughout the project and whilst doing so a discovery of WWII sandbags were found and excavated. Non-intrusive unexploded ordnance surveys have also been completed throughout with nothing of concern uncovered.

To formally mark the start of construction of **Dover Fastrack zero emission bus route**, Colas Senior Management joined representatives from Dover District Council (DDC), Kent County Council (KCC), and Homes England at a ceremony on Wednesday 2nd March.

Cllr Trevor Bartlett, Leader of Dover District Council, said: "Dover Fastrack sets the standard for sustainable public transport, so I'm delighted to join with our partners to break ground on this exciting project."



Dates for the Diary

Upcoming Exhibitions

▶ DOVER TOWN

St Mary's Church
Large Hall
Cannon Street
Dover
CT16 1BY
To be held on
Saturday 2nd April 2022
Time: 9am to 12 midday
Disabled access
Public parking in Stembrook car park

▶ WHITFIELD VILLAGE

Whitfield Village Hall
Sandwich Road
Whitfield
CT16 3LY
To be held on
Monday 11th April 2022
Time: 2pm to 6pm
Free car park adjacent to hall

▶ GUSTON VILLAGE

Guston Village Hall
The Street
Guston
CT15 5EU
To be held on
Tuesday 26th April 2022
Time: 2pm to 6pm
Free parking available

What are we are doing right now?

Colas have commenced the earthworks and drainage works. The next 4 weeks will bring about the completion of 120m section and commencement of the remainder of section 2A which forms part of the new road starting from the B&Q roundabout, off Honeywood Parkway. Currently in place is a footway diversion at the B&Q roundabout this is to divert pedestrians away from the site access to Section 2A. A site compound area is being prepared and set up near to the Tesco roundabout.

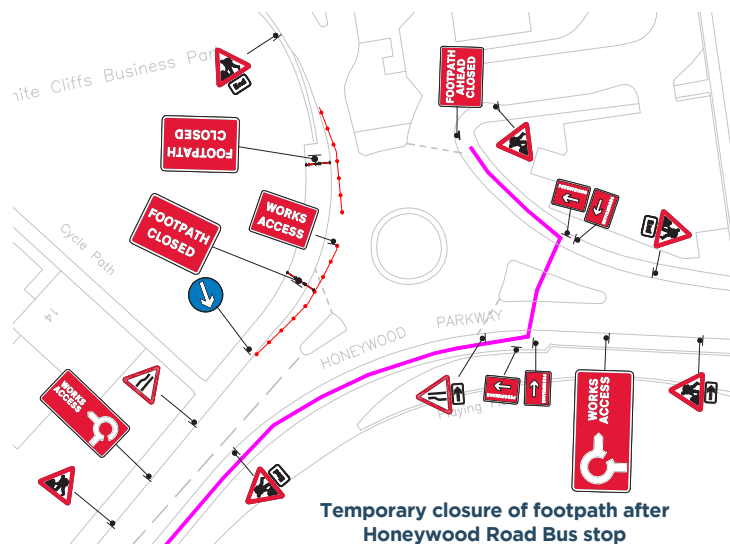
Traffic Management updates

It will be necessary to narrow lanes on the A2 to allow the bridge to be constructed, this will be between the A256 Whitfield roundabout to A256 Whitfield By-pass from 08.05.22 – 20.12.22.

Road closures and traffic management is also planned on the Dover Road during the school summer holidays 25.07.22 – 01.09.22.

Planned Temporary Diversion for Pedestrians

As part of forthcoming preparation of groundworks to build the new access road within Section 1 at the Tesco roundabout, there will be a temporary closure to a small section of footpath after Honeywood Close bus stop. A pedestrian diversion for safe crossing is located at the crossing with Melbourne Avenue.



What will this project mean for you?

The £22.9m public transport investment, which is backed by government support from the Housing Infrastructure Fund and the Zero Emission Bus Regional Areas (ZEBRA) scheme, will see a fleet of electric buses operating on Dover Fastrack link up to 5,000 new homes in Whitfield with Dover town centre and Dover Priory railway station and its High-Speed train links with London. The rapid bus transit link also incorporates stops at Dover Castle and the former Connaught Barracks site, where Homes England has planning permission for up to 300 new homes.

Construction of Dover Fastrack is expected to take around 18 months and includes a new bus, cycle, and pedestrian-only bridge across the A2 at Whitfield, as well as a new link road. With the project's strong focus on carbon reduction, **more than 10,000 new trees, shrubs, and hedgerows will be planted to provide enhanced wildlife habitat in the area.**

Want to know more?

If you want to learn more about planned activities, get involved in community events or take advantage of free training opportunities, please call or text our dedicated Public Liaison Officer on 07799 835379 or email PLODoverFT@colas.co.uk or sign up to Dover District Council's 'Keep Me Posted' service at www.dover.gov.uk or view Kent County Council website at Doverfastrack@kent.gov.uk