

DOVER FASTRACK – PROJECT NEWSLETTER

Dates for the Diary:



The next Dover Fastrack public drop-in sessions will be held at Colas Site Office, off Tesco Roundabout, Honeywood Parkway, CT16 3PS. Sessions begin at 12 midday to 2pm on **Wednesday 24th August 2022; Wednesday 28th September and Wednesday 26th October.**

Pedestrian access is via an access gate directly off the footpath on Honeywood Parkway towards Tesco, a few yards from Honeywood Close Bus stop. Visitor's parking is available on site, a gate keeper will be available to facilitate access from Tesco roundabout.

Colas Dover Fastrack Project Team will be attending **Guston Parish Council** meeting at **The Village Hall, The Street, Guston, CT15 5EU on Monday 12th September from 7pm.**

Representatives from Colas and Dover District Council Dover Fastrack Project Team will be attending **Whitfield Parish Council meeting** at the **Recreation Ground, Cranleigh Drive, Whitfield CT16 3FG on Tuesday 13 September from 7.30pm**

What has been happening?

Section 1 Tesco Roundabout to Whitfield



Section 1b Ground preparation

Trial holes along the verge on the A2 are taking place to ascertain the depth and position of the existing services to help in the construction of the bridge abutment.

The vegetation clearance continues along the verge on the A2 and inside Section 1b to the north of the A2. The drainage soakaway tanks are being installed in Section 1b north, this is part of the main construction works for draining the new Fastrack road.

Preparation works are being carried out to install below ground vertical drains to the north of the A2. These drains assist in the consolidation of the ground where the new road embankment will be constructed.

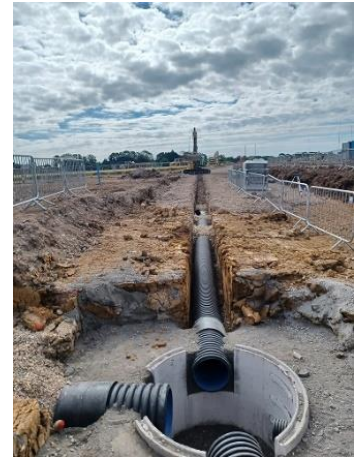
Section 2 B&Q Roundabout to Dover Road



Section 2a first layer of base course

Works are progressing well along this section with further highway drainage, kerbs and footpaths being installed. Road surfacing has also been laid up to the Public Right of Way ER60.

Further drainage basins and soakaways which will provide attenuation areas and outfalls to the underlying chalk for the drainage system have also been constructed adjacent to the new road. Colas continue to work closely with the local farmer to ensure livestock are protected during the construction works.



Section 2b drainage installation

Section 3 Dover Road, Guston



Section 3 kerb and drainage works on northbound verge near Guston Primary School.

Section 3 (Phase 1) commenced on 25/07/22 and a key milestone was quickly achieved by diverting a live medium pressure gas main outside the area of the new bus layby at Burgoyne Heights. This has enabled the construction of the new bus layby to commence.

A vacuum excavator has been used to safely determine the depth of existing live services in all working areas. Road widening works adjacent to Guston Primary School have been postponed due to a live medium pressure gas main being shallower than anticipated and the uncovering of an uncharted private water main. Plans have commenced with Southern Gas Network (SGN) and Severn Trent Water to divert and lower these services which will require a further full road closure in this area (date and duration to be confirmed). These works will be carried out later in the construction programme.

Looking Ahead

Section 1 Tesco Roundabout to Whitfield

A location in Section 1b south (behind the Dover District Council car park) will be used for test piling operations in relation to the new bridge across the A2.

Below ground vertical drains called wick drains will be installed below ground to the north of the A2 where the new road embankment will be constructed. These wick drains will be driven into the ground down to 11m deep. Road drainage will also be installed in this section including soakaways, infiltration tanks and associated drainage pipework and chambers.

Along the verge of the A2 in section 1b south we will be exposing the existing BT and Vodafone cable ducts using a vacuum excavator, this will allow us to slew the cables out of the way of the bridge abutment.

Section 2 B&Q Roundabout to Dover Road

Section 2 works will continue with further highway drainage works, kerbs and footpaths being installed in preparation for the next surfacing visit.

Section 3 Dover Road, Guston

Section 3 (Phase 1) will continue with other road widening works and subsequent installation of new kerbs and footpaths, followed by new surfacing works in the areas currently available.

Traffic Management updates

Section 1 Tesco Roundabout to Whitfield

Narrow lanes traffic management remains in place with reduced speed limit installed on the A2 between A256 Whitfield Interchange and A256 Whitfield Roundabout both east and westbound until December 2022.

Emergency Free Breakdown Recovery is available within the narrow lane section on the A2 via a dedicated 24 hr TSCO number **07974 617256**.

Section 3 Dover Road, Guston

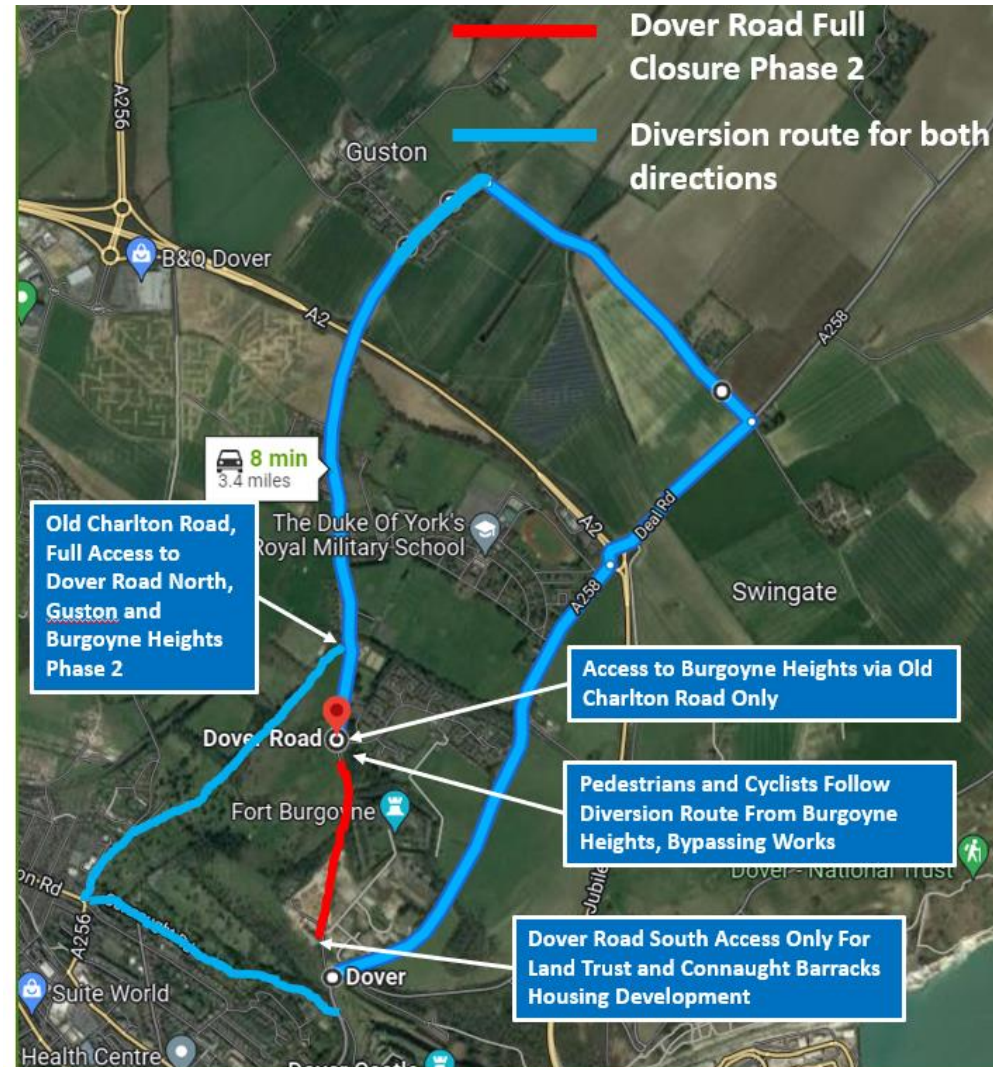
Dover Road: Phase 2 – full gated road closure of Dover Road, southbound starting after Burgoyne Heights down to Connaught Barracks housing development site from 7th September to 28th September. Closure times will be Monday to Friday 7am to 6pm, Saturdays 8am to 4pm, Sunday OPEN. In case of a Traffic Management Emergency the dedicated Traffic Safety and Control Officer can be contacted on 07974 617256.

A temporary two-way traffic light system will be in place at the junction of Dover Road and Burgoyne Heights for the first week to allow for new kerb and footpath installation. The alternative route for any through traffic including residents of Burgoyne Heights is to follow diversion routes via Old Charlton Road or Castle Hill Road towards The Lane Guston, A258 Deal Road.

There will be no vehicle access to Dover Road south during this closure except to provide access to Land Trust and Connaught Barracks housing development. The only exception for access through the closure points will be for emergency services.

A diversion route which bypasses the works will be available for pedestrians and cyclists for the duration.

Road Closure Diversion



Social Value Update

Colas are pleased to confirm that they have employed three local full-time employees at their site in Whitfield as part of their Social Value commitment for the Dover Fastrack Project. The roles include Engineering Assistant, Storeman and Cleaner.

Want to know more?

If you want to get involved in community events or take advantage of free training opportunities, please call or text our dedicated Public Liaison Officer on 07799 835379 or email PLODoverFT@colas.co.uk or sign up to Dover District Council's 'Keep Me Posted' service at www.dover.gov.uk or view Kent County Council website at www.kent.gov.uk



You can also follow us on Twitter ColasDoverFastrack @ColasDoverFT