



The Blue Badge scheme: rights and responsibilities in England

Please read this leaflet before using your badge and keep it in case you need to refer to it in future.



This leaflet is available in Braille, audio tape and CD formats. You can order copies by telephoning: 0300 123 1102.

**Record useful information here
so that it is always to hand**

Badge number

**Issued by
(name of your
local authority)**

**Issuing office
address**

**Issuing office
telephone number**

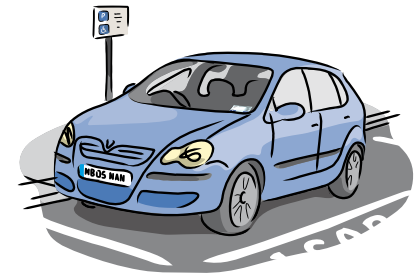
Contents

	Page
The Blue Badge Scheme	6
1. Your responsibilities as a Blue Badge holder	7
Who can use your badge	8
How to display your badge	9
When you need to use a parking disc/clock	10
Power to inspect your badge	10
Renewing your badge	11
Returning your badge	11
Drivers who hold a Blue Badge	12
Further advice and information	13

2. Where can I park?	14
Where you can park	15
Places you need to check before parking	17
Places where you cannot park	20
Safe and responsible parking	23
3. Travel advice	25
Travelling in Central London	26
London Congestion Charging Scheme	28
Travelling Abroad	29
Toll Concessions for Blue Badge holders	30

The Blue Badge scheme

Your Blue Badge will help you to park close to your destination, either as a passenger or driver. However, the badge is only valid for on-street parking. It does not automatically apply to off-street car parks, such as local authority or supermarket car parks, or on privately owned roads, such as you might find at airports. This leaflet will provide you with more information about where you can and cannot park.



How do I use my Blue Badge properly ?



You must never give your badge to friends or family to allow them to park for free without you

1 Your responsibilities as a Blue Badge holder

It is down to you to use your Blue Badge properly. The badge and its concessions are just for your use. It is a criminal offence for you or anyone else to misuse your badge, and it can lead to a £1,000 fine. Making sure that the scheme is not abused will benefit genuine badge holders, such as yourself.

If you are using the parking concessions as a passenger, you should make sure that the driver is aware of all the rules set out in this leaflet.

Who can use your badge?

The badge is for your use and benefit only. It must not be displayed unless you are using it directly.

Do not allow other people to use your badge to do something on your behalf such as shopping or collecting something for you, unless you are travelling with them.

Do not allow other people to use your badge to benefit from the concessions.

- The trip must be for your benefit only and you must be using the vehicle.

- You must never give your badge to friends or family to allow them to park for free without you, even if they are visiting you.

Do not allow other people to display the badge in the vehicle, unless:

- someone, travelling with you, is waiting for you to return to the vehicle (although consideration should be given to using a car park wherever possible); or
- someone is driving you in or out of an area, which is only accessible to vehicles displaying a Blue Badge, in order to pick up or drop you off.

How to display your badge

When using the parking concessions **you must display** the badge on the dashboard or facia panel, where it can be clearly read through the front windscreen. The front of the badge should face upwards, showing the wheelchair symbol.

If there is no dashboard or facia panel in your vehicle, you must still display your badge in a place where it can be clearly read from outside of the vehicle.

If you do not display your badge correctly you could get a parking fine.





Blue parking disc



When you need to use a parking disc/clock

In England and Wales, when you park on yellow lines or another place where there is a time restriction, you need to display the blue parking disc to show your time of arrival. The disc should be sent to you together with your Blue Badge. If not, you can get a disc from the same authority which issued your badge.

If you need to use a parking disc/clock, you must display the disc on the vehicle's dashboard or facia panel, so that the time can

be seen clearly through the front windscreen. If there is no dashboard or facia panel in your vehicle, you must still display it in a place where it can be clearly read from outside of the vehicle. You do not need to display a parking disc/clock when visiting Scotland.

Power to inspect your badge

Police officers, traffic wardens, parking attendants and civil enforcement officers have the power to inspect your badge. These people should produce an identity

card with their photograph on it to prove they are who they say they are. If any of these people ask to see your badge, you must show it to them. If you do not, you will be breaking the law and you could be fined up to £1,000.

Renewing your badge

You can apply for a new badge from your local authority some weeks before it runs out. **Do not use your badge if it is out of date or you may be fined.**

Returning your badge

If your medical condition improves and you no longer need your badge, you must return it securely to your local authority. **If you continue to display your badge when you no longer need it you may be fined up to £1,000.**

You must also make sure that the details on the front of the badge remain legible. If they become unreadable through fading or wear and tear, you must return the badge to your local authority so they can issue you with a new one. Displaying a badge that is illegible may result in a parking fine.



Drivers who hold a Blue Badge

If you are a driver and your disability is likely to affect your ability to drive (even if your car is adapted), the law says you must tell the Driver and Vehicle Licensing Agency (DVLA). You can write to them at DVLA, Swansea SA99 1TU, or phone **0300 790 6806**. If you have access to the internet, you can email them at **drivers.dvla@gtnet.gov.uk**. Their website address is **www.dvla.gov.uk**

Holding a Blue Badge does not by itself mean that you do not have to pay road tax, but you may be exempt if you meet certain other criteria set by the DVLA. For more information on the criteria for road tax exemption, contact the DVLA on **0870 240 0010** or pick up their booklet **V188** which is available from DVLA offices (see **www.direct.gov.uk/motoring** for details).



Further advice and information

You should always tell your local authority if your circumstances change, such as

- your badge needs to be renewed;
- your badge is lost, stolen or damaged;
- you change address;
- you no longer need a badge and want to return it; or
- a badge needs to be returned because the holder has died.

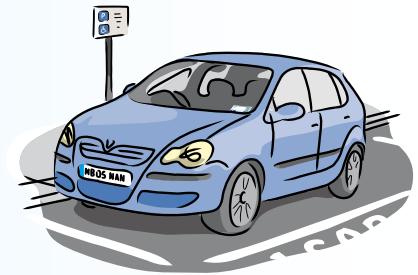
You should always tell your local authority first, but if they are unable to help please telephone the Blue Badge Advice Line on **0161 367 0009** or **0207 944 2914** or email **blue.badge@dft.gsi.gov.uk**

2

Where can I park?

If you do not drive yourself, it is important that you share this information with anyone who will be carrying you as a passenger.

What are the rules?



Where you can park

The following table lists the parking benefits available to you as a Blue Badge holder.

However, you must always check signs to see what the rules are when parking.

Place

Yellow lines



Conditions

Badge holders may park on single or double yellow lines for up to three hours in England and Wales except where there is a ban on loading or unloading, and at a few locations where local schemes apply, such as parts of central London (see page 18).

There is no time limit for parking on yellow lines in Scotland.

You must display your Blue Badge and the special blue parking disc showing your time of arrival, except in Scotland.

You must wait for at least one hour after a previous period of parking before you can park the same vehicle in the same road or part of a road on the same day.

Place

'On-street' parking meters and pay-and-display machines

Conditions

Badge holders may park for free and for as long as they need to unless there is a traffic sign specifying a time limit for holders of disabled parking badges.

You must display your Blue Badge.

Where a time limit is in force, you must also display the special blue parking disc showing your time of arrival.

'On-street' disabled parking bays

These have a Blue Badge sign (some may still be orange).

You may park free and without time limit unless signs say otherwise (check local signs for information).

You must display your Blue Badge.

Always try to use these bays instead of parking on yellow lines.

Places you need to check before parking

There are a number of restrictions and local parking schemes which you need to be aware of. Here is a list of these places and

the parking restrictions in force. If in doubt, ask before you travel.

Place

Off-street car parks (such as supermarket or local authority car parks)



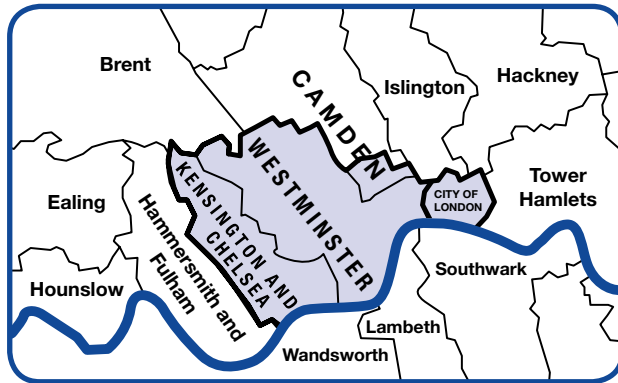
Conditions

Most car park operators provide parking spaces for disabled people. However, it is up to the car park owner to decide whether badge holders can park free of charge.

Do not assume you can always park for free.

Place

The London boroughs of Kensington & Chelsea, the City of Westminster, the City of London and part of the London Borough of Camden (see map below for boundaries)



Town centres where local schemes are in operation

Conditions

These four boroughs offer their own individual concessions to disabled people instead of the Blue Badge scheme.

They do, however, provide a number of bays for Blue Badge holders. You can buy a copy of the *Pie Guide* which shows where these bays are located by phoning PIE Enterprises on **0844 847 0875**.

Each of the boroughs issues its own disabled parking badge to people who live or work in their areas.

Contact details for these four London boroughs are provided on pages 26 and 27 of this leaflet.

You can find the location of parking bays in London and elsewhere at **www.bluebadge.direct.gov.uk**

Please check local signs for information.

Place

Road systems at airports

Conditions

Contact the airport in advance to check the parking arrangements.

Private roads

Do not park unless you have permission from the owner(s).

Red Routes (major roads in Greater London which are marked with a single or double red line)



A vehicle displaying a Blue Badge may stop on single or double red lines, but only to pick up or set down the badge holder.

You are not allowed to pick up or set down Blue Badge holders at bus stops on red routes where there is also a wide white line.

Parking on red routes is only allowed, if at all, at spaces specifically reserved for Blue Badge holders. You must always check the signs to see what concessions are available.

Transport for London has general information on concessions for Blue Badge holders on roads that have priority (red) route controls. You can get this information by phoning them on **0845 305 1234** or by visiting their website at **www.tfl.gov.uk**

Please note there are a small number of red routes, outside of London. Please contact the relevant local authority for advice on parking restrictions on these routes.

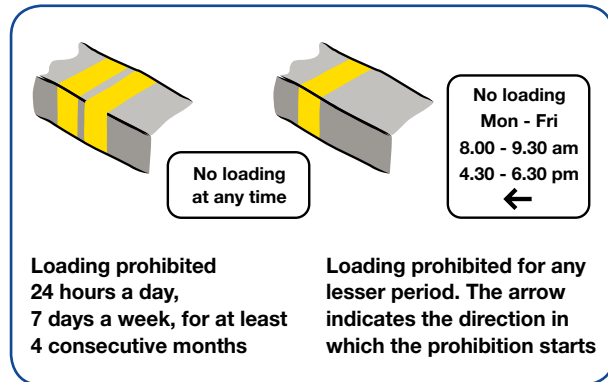
Places where you cannot park

The Blue Badge is not a licence to park anywhere. Like other road users, you must obey the rules of the road, as laid out in the

Highway Code. Here is a list of places where you must not park.

Place

Places where there are loading and unloading restrictions



No loading at any time

**No loading Mon - Fri
8.00 - 9.30 am
4.30 - 6.30 pm
←**

Loading prohibited 24 hours a day, 7 days a week, for at least 4 consecutive months

Loading prohibited for any lesser period. The arrow indicates the direction in which the prohibition starts

Conditions

Look for yellow markings on the kerb and details of any restrictions on plates displayed at the kerb-side of the road on zone entry signs.

Place

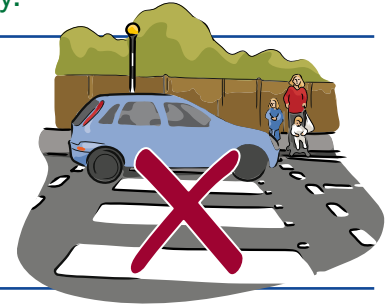
Parking places reserved for specific users such as permit holders, doctors, local residents, people loading or unloading, taxis or cyclists

Conditions

All parking is forbidden but you may be able to get permission from your local authority's highways department to use a specific residents' parking bay.

Pedestrian crossings (zebra, pelican, toucan and puffin crossings), including areas marked by zig-zag lines

All parking forbidden



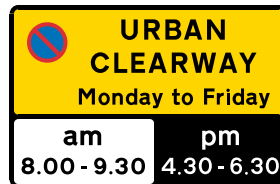
Clearways (no stopping)

All parking forbidden

A bus stop clearway during its hours of operation

All parking forbidden

An urban clearway within its hours of operation



You may pick up or drop off passengers. All other parking forbidden

Place**Conditions**

School 'keep clear' markings during the hours shown on a yellow no-stopping plate

All parking forbidden

During the time a ban on loading or unloading is in force

All parking forbidden

Bus, tram or cycle lanes or cycle tracks

All parking forbidden



Where there are double white lines in the centre of the road (even if one of the lines is broken)

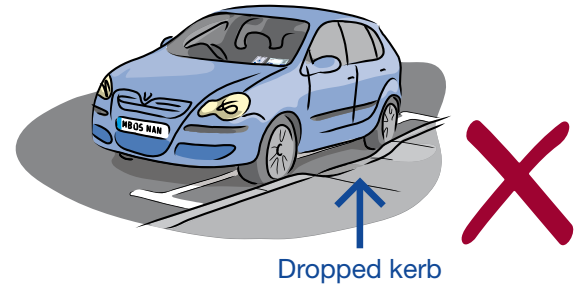
All parking forbidden

Suspended meter bays or when use of the meter is not allowed

All parking forbidden

Where temporary parking restrictions are in force, as shown for example by no-waiting cones

All parking forbidden



Safe and responsible parking

Do **not** park where it would endanger, inconvenience or obstruct pedestrians or other road users. Examples of dangerous or obstructive parking include the following, although there are others:

- school entrances, bus stops, on a bend, or near the brow of a hill or hump bridge;
- where it would make it difficult for others to see clearly, such as close to a junction;
- where it would make the road narrow, such as by a traffic island or roadworks;

- where it would hold up traffic, such as in narrow stretches of road or blocking vehicle entrances;
- where emergency vehicles stop or go in and out, such as hospital entrances;
- where the kerb has been lowered or the road raised to help wheelchair users; and
- on a pavement, unless signs permit it.

The Blue Badge is not a licence to park anywhere. If you park where it would cause an obstruction or danger to other road users your vehicle could be removed by the police.

REMEMBER

If you do not drive yourself, you should share the information in this leaflet with the person who will be carrying you as a passenger.

You cannot legally be wheelclamped on the public highway ('on-street') for parking offences, provided you correctly display a

valid Blue Badge according to the rules of the scheme. But parking in forbidden areas or where it would endanger or obstruct other road users is an offence, which could mean you get a parking fine. You could also be prosecuted, have your car towed away and your badge withdrawn.

How do I use
my Blue Badge
when I am
travelling?

3

Travel advice

You can use your badge when travelling in the UK and European Union but the concessions do vary. If in doubt always check locally before travelling somewhere new.

Travelling in Central London

If you are planning to visit one of the four Central London boroughs, you may wish to get more information about parking from them first. Please remember that things can change; if in doubt always check locally. Here are the addresses to write to:

City of London

Department of Technical Services,
PO Box 270,

Guildhall, London EC2P 2EJ

Tel: 020 7332 1548

email: parking.administration@cityoflondon.gov.uk

Kensington & Chelsea

Parking Operations

The Annexe, Council Offices

Pembroke Road, London W8 6LZ

Tel: 020 7361 3004

email: parking@rbkc.gov.uk

Camden

Passenger and Accessible
Transport Service Team
PO Box 64175,
London WC1A 9BY
Tel: 0207 974 5919/6435
email: pats@camden.gov.uk

Westminster

Permits Administration
PO Box 5744,
Dingwall IV15 9XB
Tel: 020 7641 5123
email: parkingpermits@westminster.gov.uk

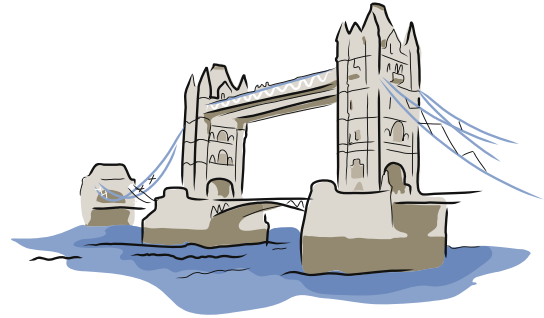


London Congestion Charge Scheme

As a badge holder you do not have to pay the London Congestion Charge.

To qualify for exemption from the Charge, you must pre-register with Transport for London and pay a one-off registration fee of £10. You need to apply at least 10 days before your journey.

You do not need to own or drive a vehicle to register for this concession. You can register up to two vehicles that you normally use for



travelling in Central London. You can get a registration form by writing to Congestion Charging, PO Box 2985, Coventry CV7 8ZR, by visiting the Congestion Charge website at www.cclondon.com, or by calling their helpline on 0845 900 1234 (Minicom 020 7649 9123).



Travelling Abroad

Your Blue Badge is recognised throughout the European Union (EU). This means that you can take advantage of the parking concessions available in all other EU countries.

There are no current arrangements for you to use your badge outside the European Union, in countries such as the USA, Australia or Canada.

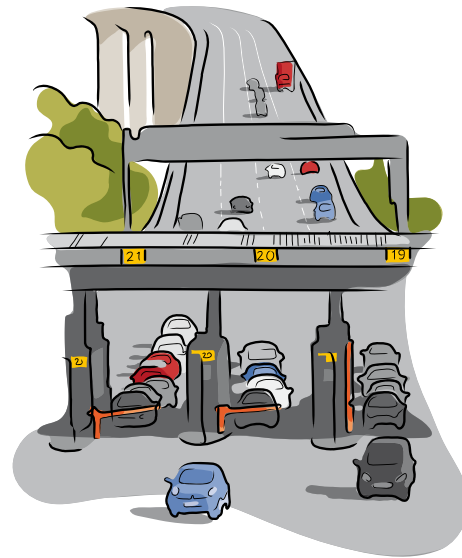
Please note that the **concessions provided in other EU countries may not be the same as in the UK.** You can download a full list of EU concessions at www.dft.gov.uk/transportforyou/access/bluebadge Copies can also be ordered by post from DfT Publications (please see details on the page 31 this leaflet).

Please quote reference number 08DFT004 for the leaflet and 08DFT005 for a separate folder which gives a translation of the arrangements in the language of the country you are visiting, for display in your vehicle windscreen.

Toll concessions for Blue Badge holders

Badge holders are exempt from tolls at certain river crossings, bridges and tunnels. Further details of these concessions are available on the Directgov website at www.direct.gov.uk/en/DisabledPeople/MotoringAndTransport/Bluebadgescheme/DG_4001061

In some cases you will have to apply in advance to qualify for a concession. As toll operators sometimes vary their concessions it is a good idea to check with the owners or operators before you travel.



Local Authorities automatically receive a copy of this leaflet with every Blue Badge that they order from the Stationery Office.

Members of the public can order additional copies of this leaflet (ref T/INF/1214) from:

DfT Publications

www.dft.gov.uk/orderingpublications

Tel: 0300 123 1102

Fax: 0300 123 1103

or email dft@cambertown.com

Produced by the
Department for Transport
Reprinted April 2010
© Crown Copyright 2007
Product Code T/INF/1214

75% recycled
When you have finished with
this leaflet please recycle it



Department for
Transport